



---

# MMWR<sup>TM</sup>

## Morbidity and Mortality Weekly Report

---

Surveillance Summaries

June 7, 2002 / Vol. 51 / No. SS-3

---

### Abortion Surveillance — United States, 1998

---

**CENTERS FOR DISEASE CONTROL AND PREVENTION**

**SAFER • HEALTHIER • PEOPLE<sup>TM</sup>**

The *MMWR* series of publications is published by the Epidemiology Program Office, Centers for Disease Control and Prevention (CDC), U.S. Department of Health and Human Services, Atlanta, GA 30333.

**SUGGESTED CITATION**

General: Centers for Disease Control and Prevention. *Surveillance Summaries*, April 13, 2002. MMWR 2002;51(No. SS-3).

Specific: [Author(s)]. [Title of particular article]. In: *Surveillance Summaries*, April 13, 2002. MMWR 2002;51(No. SS-3):[inclusive page numbers].

**Centers for Disease Control and Prevention**

David W. Fleming, M.D.  
*Acting Director*

Julie L. Gerberding, M.D.  
*Acting Deputy Director for Science and Public Health*

Dixie E. Snider, Jr., M.D., M.P.H.  
*Associate Director for Science*

**Epidemiology Program Office**

Stephen B. Thacker, M.D., M.Sc.  
*Director*

**Division of Public Health Surveillance and Informatics**

Daniel M. Sosin, M.D., M.P.H.  
*Director*  
*Associate Editor, Surveillance Summaries*

**Office of Scientific and Health Communications**

John W. Ward, M.D.  
*Director*  
*Editor, MMWR Series*

Suzanne M. Hewitt, M.P.A.  
*Managing Editor*

Lynne McIntyre, M.A.L.S.  
*Project Editor*

Lynda G. Cupell  
*Visual Information Specialist*

Michele D. Renshaw  
Erica R. Shaver  
*Information Technology Specialists*

**CONTENTS**

Introduction ..... 2  
 Methods ..... 2  
 Results ..... 3  
 Discussion ..... 5  
 References ..... 9  
 Figures ..... 11  
 Tables ..... 16

## Abortion Surveillance—United States, 1998

Joy Herndon, M.S.  
Lilo T. Strauss, M.A.  
Sara Whitehead, M.D.  
Wilda Y. Parker  
Linda Bartlett, M.D.  
Suzanne Zane, D.V.M.

*Division of Reproductive Health  
National Center for Chronic Disease Prevention and Health Promotion*

### Abstract

**Problem/Condition:** In 1969, CDC began abortion surveillance to document the number and characteristics of women obtaining legal induced abortions, to monitor unintended pregnancy, and to assist efforts to identify and reduce preventable causes of morbidity and mortality associated with abortions.

**Reporting Period Covered:** This report summarizes and reviews information reported to CDC regarding legal induced abortions obtained in the United States in 1998.

**Description of System:** For each year since 1969, CDC has compiled abortion data by occurrence. From 1973 to 1997, data were received from or estimated for 52 reporting areas in the United States: 50 states, the District of Columbia, and New York City. In 1998, CDC compiled abortion data from only 48 reporting areas; Alaska, California, New Hampshire, and Oklahoma did not report.

**Results:** In 1998, 884,273 legal induced abortions were reported to CDC, representing a 2% decrease from the 900,171 legal induced abortions reported by the same 48 reporting areas for 1997. The abortion ratio, defined as the number of abortions per 1,000 live births, was 264, compared with 274 in 1997 (for the same 48 areas); the abortion rate for these 48 areas was 17 per 1,000 women aged 15–44 years for both 1997 and 1998.

The availability of information about characteristics of women who obtained an abortion in 1998 varied by state and by the number of states reporting each characteristic. The total number of legal induced abortions by state is reported by state of residence and state of occurrence; characteristics of women obtaining abortions in 1998 are reported by state of occurrence.

Women undergoing an abortion were likely to be young (i.e., age <25 years), white, and unmarried; slightly more than one half were obtaining an abortion for the first time. Of all abortions for which gestational age was reported, 56% were performed at  $\leq 8$  weeks of gestation, and 88% were performed before 13 weeks. Overall, 19% of abortions were performed at the earliest weeks of gestation ( $\leq 6$  weeks), 18% at 7 weeks, and 19% at 8 weeks. From 1992 (when this information was first collected) through 1998, an increasing percentage of abortions were performed at the very early weeks of gestation. Few abortions were provided after 15 weeks of gestation; 4% were obtained at 16–20 weeks, and 1.4% were obtained at  $\geq 21$  weeks. A total of 24 reporting areas submitted information stating that they performed medical (nonsurgical) procedures (two of these areas categorized medical abortions with “other” procedures), making up <1% of all procedures reported from all states.

From 1993 through 1997 (years for which data have not been published previously and the most recent years for which such data are available), 36 women died as a result of complications from known legal induced abortion, and three deaths were associated with known illegal abortion. The annual case-fatality rate of legal induced abortion ranged from 0.3 to 0.8 abortion-related deaths per 100,000 reported legal induced abortions.

**Interpretation:** From 1990 through 1995, the number of abortions declined each year; in 1996, the number increased slightly, but in 1997, it declined to its lowest level since 1978. In 1998, the number of abortions continued to decrease when comparing the 48 reporting areas. In 1997, as in previous years, deaths related to legal induced abortions occurred rarely.

**Public Health Actions Taken:** The number and characteristics of women who obtain abortions in the United States should continue to be monitored so that trends in induced abortion can be assessed and efforts to prevent unintended pregnancy can be evaluated.

## Introduction

In 1969, CDC began conducting abortion surveillance to document the number and characteristics of women obtaining legal induced abortions, to monitor unintended pregnancy, and to assist efforts to identify and reduce preventable causes of morbidity and mortality associated with abortions. This report is based on abortion data for 1998 provided to CDC's National Center for Chronic Disease Prevention and Health Promotion (NCCDPHP), Division of Reproductive Health.

## Methods

For 1998, CDC compiled data that were voluntarily provided from 48 reporting areas in the United States: 46 states (excluding Alaska, California, New Hampshire, and Oklahoma), the District of Columbia, and New York City. Legal induced abortion was defined as a procedure, performed by a licensed physician or someone acting under the supervision of a licensed physician, that was intended to terminate a suspected or known intrauterine pregnancy and to produce a nonviable fetus at any gestational age (1,2). The total number of legal induced abortions was available from all reporting areas; however, not all of these areas collected information regarding some or all the characteristics of women who obtained abortions.

Because these data are reported voluntarily, several limitations exist: 1) data are reported by the state in which the abortion was performed (state of occurrence); 2) data for states that do not report were not estimated for 1998 but were estimated before 1998; and 3) data provided to state or area health departments by providers may be incomplete. Therefore, the rates and ratios in this report may reflect an undercount of abortions for some states with more stringent legal requirements for obtaining an abortion (causing women to seek abortions elsewhere) and may be an overrepresentation for some states that have many out-of-state women obtaining legal induced abortions (3).

The availability of information about characteristics of women who obtained an abortion in 1998 varied by state. Most reporting areas (45 states, the District of Columbia, and New York City) collected and reported adequate abortion data (i.e., data with  $\leq 15\%$  unknown values and categorized in accordance with the study variables) by age of the woman, whereas only 23 states, the District of Columbia, and New York City collected and reported adequate abortion data by Hispanic ethnicity. Therefore, the findings in this report reflect characteristics only of women from reporting areas that submitted adequate information. Areas were excluded from specific analysis if data regarding a given

characteristic were unknown for  $>15\%$  of women. With two exceptions, the percentage data for each state table include unknown values; unknowns have not been redistributed for the calculation of these percentages. However, percentages based only on known values are included for trend data, out-of-area residents, adolescent ages, and two-characteristics tables.

For the 48 reporting areas, data concerning the number of women obtaining legal induced abortions were provided by the central health agency.\* These agencies provided information on numbers of abortions and characteristics of women by the state in which the abortions were performed (i.e., state of occurrence). For most states, only abortion totals were available by state of residence. However, one state, Wisconsin, reported characteristics only for women who were residents and who obtained abortions in the state and not for women from out of state; and one state, Iowa, provided both numbers and characteristics only for in-state residents. Occurrence data, therefore, might not accurately reflect the patterns of abortion among residents of some states and should be interpreted with caution. A large proportion of abortions that occur in some states may be obtained by residents of other states. Also, in addition to the four nonreporting states, two other states did not report abortions by residence and one state did not specify the state of residence for women from out of state, making the numbers of legal abortions by state of residence incomplete.

Women who obtained legal induced abortions were categorized by 5-year age groups and by single years of age for adolescents aged 15–19 years. Both abortion ratios (number of abortions per 1,000 live births in the same age group per year) and abortion rates (number of abortions per 1,000 women in the applicable age group per year) are presented by age group. Starting with 1996, ratios were calculated by using the number of live births to residents of each area reported to CDC's National Center for Health Statistics; numbers had previously been received from state health departments. Rates were calculated by using the number of women residents of each area from tabulations provided by the US Census Bureau. Because nearly all (94%) abortions among women aged  $<15$  years occurred among those aged 13–14 years in 1988 (the latest year for which this information is known) (4), the population of women aged 13–14 years was used as the denominator for calculating abortion rates for women  $<15$  years. Rates for women aged  $\geq 40$  years were based on the number of women aged 40–44 years. Rates for all women who obtained abortions, however, were based on the population of women aged 15–44 years.

\* Includes state health departments and the health departments of New York City and the District of Columbia.

Race was categorized by three groups: white, black, and all other races. "Other" races included Asian/Pacific Islander, American Indian, Alaska Native, and women classified as "other" race. As in previous reports, Hispanic ethnicity and race were provided separately and are not cross-classified by race and Hispanic ethnicity.

Marital status was reported as either married (including women who were married or separated) or unmarried (including those who were never married, divorced, or widowed, except where noted). Reporting of marital status differed somewhat by state, particularly for the data used as denominators for the abortion ratios by marital status; therefore, abortion ratios by marital status should be interpreted with caution.

Gestational age (in weeks) at the time of abortion was reported adequately by 44 reporting areas. In 21 areas, gestational age estimates were derived from the time elapsed since the woman's last menstrual period. For 18 other states, gestational age was reported on the basis of the physician's estimate. For the remaining five areas, gestational age came from a combination of physician's estimates (from information from the clinical examination including ultrasound results) and the time elapsed since the woman's last menstrual period. Most (42 of 44) areas that reported adequate data on weeks of gestation at the time of abortion also reported abortions performed at  $\leq 8$  weeks separately for  $\leq 6$ , 7, and 8 weeks of gestation.

CDC has periodically reported information on abortion-related deaths since 1972 (5,6). Sources for such information included national and state vital records, maternal mortality review committees, surveys, private citizens and groups, media reports, health-care providers, medical examiners' reports, and computerized searches of full-text newspaper databases. All deaths associated with any type of abortion (induced or spontaneous) were reviewed. For each reported induced abortion or abortion of unknown type, clinical records and autopsy reports were requested and reviewed by two medical epidemiologists to determine the cause of death and verify that the death was abortion related.

An abortion-related death was defined as a death resulting from 1) a direct complication of an abortion, 2) an indirect complication caused by the chain of events initiated by abortion, or 3) aggravation of a preexisting condition by the physiologic or psychologic effects of the abortion (1,2). Each abortion-related death was then categorized as legal induced, illegal induced, spontaneous, or unknown.

Included in this report are abortion-related deaths and case-fatality rates for 1972 to 1997. National case-fatality rates were calculated as the number of known legal induced abortion-related deaths per 100,000 reported legal induced abortions.

## Results

In 1998, a total of 884,273 legal induced abortions were reported to CDC by 48 reporting areas. This represents a 2% decrease from 1997, for which 900,171 legal induced abortions were reported from the same 48 reporting areas (7) (Table 1). From 1970 through 1982, the reported number of legal abortions in the United States increased every year. The largest percentage increase occurred from 1970 to 1971 (Figure 1, Table 2). From 1974 through 1982, the annual rate of increase declined and reached a low of 0.2% for 1980–1981 and for 1981–1982. From 1982 through 1986, the number of abortions fluctuated by  $\leq 5\%$  from year to year and increased moderately from 1986 to 1990. Between 1990 and 1998, the annual number of abortions decreased each year, except for 1996, when a slight increase occurred compared with 1995.

The national legal induced abortion ratio increased from 1970 through 1980 and declined from 1980 to 1983. The national ratio then peaked at 364 abortions per 1,000 live births in 1984 and began to decline steadily starting in 1987, from 356 per 1,000 to 311 per 1,000 in 1995 (Figure 1, Table 2). In 1996, the national abortion ratio increased slightly to 315, but in 1997, it again decreased, to 306. When comparing the same 48 reporting areas, the abortion ratio decreased slightly from 274 (in 1997) to 264 in 1998 (Table 2).

The national legal induced abortion rate increased from five abortions per 1,000 women aged 15–44 years in 1970 to 25 per 1,000 in 1980. From 1981 through 1993, the rate remained stable at 23–24 abortions per 1,000 women, then declined to 21 in 1994, and to 20 in 1995. The 1997 abortion rate of 20 per 1,000 women was relatively unchanged since 1995. When the same 48 reporting areas are compared, the abortion rate remained unchanged at 17 abortions per 1,000 women for 1997 and 1998.

In 1998, as in previous years, most legal induced abortions were performed in New York City, Florida, and Texas; the fewest were performed in Wyoming, South Dakota, Idaho, and North Dakota (Table 3). In previous years, a large number of legal induced abortions also were performed in California (7). The lack of data for California explains most of the national decrease of 25% in the number of abortions reported between 1997 and 1998.

For the second consecutive year, total numbers of abortions, ratios, and rates are presented by state of residence as well as by state of occurrence. Information by state of residence is not complete, however, because in addition to the four nonreporting states, three states could not provide any data concerning the residence status of all women obtaining abortions in their state. Rates and ratios by residence and

occurrence may vary for a given state. In states that reported information on abortions obtained by out-of-state residents, approximately 9% of abortions in 1998 were obtained by out-of-state residents. The percentage ranged from approximately 64% in the District of Columbia to <0.5% in Hawaii (Table 3).

Women aged 20–24 years were known to have obtained approximately one third (31%) of all abortions; women aged <15 years obtained <1% of all abortions in areas where age was reported (Table 4). Abortion ratios were highest for the youngest women (750 abortions per 1,000 live births for women aged <15 years and 391 per 1,000 for women aged 15–19 years) and for the oldest women (338 per 1,000 live births for women aged  $\geq 40$  years) (Figure 2, Table 4). The ratio was lowest for women aged 30–34 years (157 per 1,000 live births). Among adolescents, the abortion ratio was highest for those <15 years (Table 5). In contrast to abortion ratios, among women for whom age was reported, abortion rates were highest for women aged 20–24 years (36 abortions per 1,000 women) and lowest for women at the extremes of reproductive age (2 abortions per 1,000 women aged 13–14 years and 2 per 1,000 women aged 40–44 years) (Table 4).

For women in most age groups, the abortion ratio increased from 1974 through the early 1980s and declined thereafter, particularly for the youngest and oldest reproductive-age women (Figure 3). Abortion ratios for women <15 years have been and remain higher than those for the other age groups. The abortion ratio for women aged 20–34 years (the groups with the highest fertility rates) (8) has remained relatively stable since the mid-1980s.

In 1998, for women whose weeks of gestation at the time of abortion were adequately reported, approximately 55% of reported legal induced abortions were known to be obtained at  $\leq 8$  weeks of gestation, and approximately 86% at <13 weeks (Table 6). Overall, 19% of abortions were performed during the earliest weeks of gestation ( $\leq 6$  weeks), 17% at 7 weeks, and 18% at 8 weeks (Table 7). Few abortions were provided after 15 weeks of gestation; 4% were obtained at 16–20 weeks, and 1.4% were obtained at  $\geq 21$  weeks (Table 6).

For women whose procedure was adequately reported, almost all (97%) abortions were known to have been performed by curettage and <0.5% by intrauterine instillation (Table 8). Hysterectomy and hysterotomy were included in the “other” procedure category and were used in fewer than 0.005% of abortions. Twenty-four reporting areas submitted information stating that they performed medical (nonsurgical) procedures<sup>†</sup> (two of these areas included medical abortions in the “other” category), making up <1% of all

procedures reported from all states. However, some other reporting areas do not include medical abortions as a separate category in their abortion reporting form.

In the 39 areas for which race was adequately reported, approximately 56% of women who obtained legal induced abortions were known to be white (Table 9). The abortion ratio for black women was 512 per 1,000 live births, 2.7 times the ratio for white women (189 per 1,000 live births). The abortion ratio for women of other races (336 per 1,000 live births) was approximately 1.8 times the ratio for white women. In addition, the abortion rate for black women (36 per 1,000 women) was 3.0 times the rate for white women (12 per 1,000 women). The abortion rate for women of other races was 2.0 times the rate for white women.

Twenty-three states, the District of Columbia, and New York City reported adequate data<sup>§</sup> concerning the Hispanic ethnicity of women who obtained legal induced abortions (Table 10). The percentage of abortions known to have been obtained by Hispanic women in these reporting areas ranged from <1% in several states to approximately 31% in Texas and New York City. For Hispanic women in these reporting areas, the abortion ratio was 273 per 1,000 live births, similar to the ratio for non-Hispanics in the same areas (271 per 1,000 live births). The abortion rate for Hispanic women was 20 abortions per 1,000 women; for non-Hispanic women, the abortion rate was 15 abortions per 1,000 women.

For women whose marital status was adequately reported, 79% of women who obtained abortions were known to be unmarried (Table 11). The abortion ratio for unmarried women was approximately nine times the ratio for married women (627 versus 71 abortions per 1,000 live births).

For women for whom information on previous live births was adequately reported, 40% of women who obtained legal induced abortions were known to have had no previous live births, and 86% had had  $\leq 2$  previous live births (Table 12). The abortion ratio was highest for women who had had three previous live births (305 per 1,000 live births) and lowest for women who had had one previous live birth (214 per 1,000 live births).

In 1998, of women who obtained an abortion and whose number of previous abortions was adequately reported, 53% were known to have obtained an abortion for the first time. Nineteen percent of women had had  $\geq 2$  previous abortions (Table 13).

For women whose age and race were known, a greater percentage of white women obtaining abortions tended to be in the two youngest and two oldest age groups compared with

<sup>†</sup> Medical (nonsurgical) induced abortion procedures involve the administration of a medication or medications to induce an abortion.

<sup>§</sup> After excluding 15 states for which ethnicity data were unknown for >15% of women who obtained an abortion.

black and other women (Table 14). For women obtaining abortions whose marital status and race were known, the percentage of women of black or other races who were unmarried (84%) was higher than the percentage of white women (79%). Among women obtaining abortions whose age and Hispanic ethnicity were known (24 reporting areas), a somewhat smaller percentage of Hispanic women obtained their abortions at  $\geq 35$  years of age than did non-Hispanic women (Table 15).

Overall, approximately 88% of all abortions (for which gestational age at time of abortion was reported and known) were obtained during the first 12 weeks of pregnancy (Table 1). For women whose age and weeks of gestation were known, the percentage of women who obtained an abortion early in pregnancy ( $\leq 8$  weeks of gestation) increased with age (Figure 4, Tables 16 and 17). The percentage who obtained an abortion very late in pregnancy ( $\geq 21$  weeks of gestation) decreased with age for women through 25–29 years and remained stable for women in older age groups (Table 16). Among women with known race and weeks of gestation, white women and women of other races were more likely than black women to obtain abortions very early in pregnancy ( $\leq 6, 7, \text{ or } 8$  weeks of gestation) (Table 17).

For women whose type of procedure and weeks of gestation were known, 99% of abortions at  $\leq 15$  weeks of gestation were performed by using curettage (primarily suction procedures) (Table 18). One percent of abortions performed at  $\leq 8$  and at  $\geq 16$  weeks of gestation were reported as performed by medical (nonsurgical) methods. Our study and those of others have found that more than 50% of all U.S. abortions are performed at  $\leq 8$  weeks of gestation, which is the timing of the regimen approved for both mifepristone and methotrexate (9). The medical (nonsurgical) procedures reported most often for abortions performed early in gestation ( $\leq 7$  weeks) were methotrexate with misoprostol and mifepristone with misoprostol (10,11). Intrauterine instillation involved the use of saline or prostaglandin and was used rarely, primarily at  $\geq 16$  weeks of gestation.

From the National Pregnancy Mortality Surveillance System, CDC identified 109 maternal deaths with some indication of abortion on the death certificate for 1993 through 1997 (years for which data have not been published previously and the most recent years for which such data are available). Investigation of these cases showed that 36 of the 109 deaths were related to legal induced abortion and three to illegal induced abortion (Table 19). Thirty-nine deaths were due to spontaneous abortion, and two deaths were due to abortion of unknown type. Twenty-nine deaths were found not to be abortion related. Numbers of deaths due to legal

induced abortion were highest before the 1980s; the last 5 years showed one third fewer deaths than the previous 5 years. Possible abortion-related deaths that occurred during 1998 and 1999 are being investigated.

The case-fatality rate for known legal induced abortion for 1993 to 1997 was 0.6 deaths per 100,000 legal abortions (range 0.3–0.8) (Table 19, Figure 5).

## Discussion

From 1990 (the year in which the number of abortions was highest) through 1995, the annual number of abortions in the United States decreased by 15% (Table 2) (12,13). From 1995 to 1996, the number increased slightly (1.2%)(6), but declined again in 1997 by 3%. In 1998, for the same 48 reporting areas that reported in 1997, the number of abortions decreased by 1.8%.

In 1996, a slight increase occurred in the abortion ratio, but in 1997, the abortion ratio was at its lowest recorded level since 1975 (14). When the same 48 reporting areas for which information is known for 1998 are compared, the abortion ratio has declined from 1996 to 1998.

The 1998 abortion rate of 17 per 1,000 women of reproductive age (15–44 years) remained unchanged since 1997 for the 48 reporting areas. The historical trends in the abortion rate might reflect multiple factors, including the decreasing number of unintended pregnancies; a shift in the age distribution of reproductive-age women toward the older and less fertile ages; reduced access to abortion services, including the passage of abortion laws that affect adolescents (e.g., parental consent or notification laws and mandatory waiting periods); and changes in contraceptive practices, including an increased use of contraception, particularly of condoms, and, among young women, of long-acting hormonal contraceptive methods that were introduced in the early 1990s (15–22). (Many of these reasons also apply to the decline in abortion ratios). The induced abortion rate reported here for the United States was higher than recent rates reported for Australia, Canada, and Western European countries and lower than rates reported for China, Cuba, most Eastern European countries, and several of the Newly Independent States of the former Soviet Union (23,24). Abortion and birth rates for teenagers are higher in the United States than in most Western European countries and some Eastern European countries (25).

As in previous years, the abortion ratio in 1998 varied substantially by age (7). Although the ratio was highest for adolescents, the percentage of legal induced abortions obtained by women aged  $\leq 19$  years has decreased since the early 1970s

(from 33% in 1973 to 22% in 1990 and to 20% in 1992) and has remained at that level (Table 1) (12,26–27). From 1983 through 1998, the abortion ratio has gradually declined for women aged 15–19 years (Figure 3). Other studies have indicated a decrease in birth rates for women aged 15–19 years from 1991 through 2000 and a decrease in adolescent pregnancy rates from 1991 to 1997 (8,28–32).

The differential between the overall abortion ratio for black women and that for white women has increased steadily since 1989 (33). Rates and ratios for white women include data for Hispanics; therefore, comparisons of race may differ from state to state. Census Bureau estimates and birth certificate data show that the large majority of Hispanic women report themselves as white. Race-specific differences in legal induced abortion ratios and rates might reflect differences in factors such as socioeconomic status, access to family-planning and contraceptive services, contraceptive use, and incidence of unintended pregnancies.

As in the previous 3 years, the abortion-to-live-birth ratios for Hispanic women and non-Hispanic women during 1998 were similar (273 vs. 271). A 1996 report describing characteristics of women who obtain abortions stated that Hispanic women were less likely than non-Hispanic women to obtain an abortion (34). As in the past, the abortion rate per 1,000 Hispanic women was higher than the rate per 1,000 non-Hispanic women, which is consistent with several other studies (17,34). For women in all age groups, fertility was substantially higher for Hispanic than for non-Hispanic women (8).

In 1998, 38 states and the District of Columbia and New York City reported Hispanic ethnicity of women who obtained abortions. Because of concerns regarding the completeness of such information (>15% unknown data) in some states, data from only 23 states, the District of Columbia and New York City were evaluated to determine the number and percentage of abortions obtained by women of Hispanic ethnicity in 1998. These geographic areas represent less than half of all reproductive-age Hispanic women in the United States in 1998 and only about 40% of U.S. Hispanic births (8,35). Thus, the number of Hispanic women who obtain abortions is underestimated, and the number, ratio, and rate of abortions for Hispanic women in this report may not be representative of the overall Hispanic population in the United States.

Since 1980, the percentage distribution of abortions by gestational age has been stable, with some small increases at the earliest and latest gestational ages. Since 1992, most areas have reported abortions performed at  $\leq 8$  weeks using

additional categories of  $\leq 6$ , 7, and 8 weeks. From 1992 through 1998, slight decreases have occurred in the percentage of abortions performed at 8, 9–10, and 11–12 weeks, and increases have occurred in the percentage performed at the early weeks of gestation. The percentage performed at  $\leq 6$  weeks increased from 14.3% to 19.2%, and those at 7 weeks from 15.6% to 17.8% (Table 1). This increase in very early procedures may be related to increased availability of early abortion services since 1992 as well as to an increase in medical (nonsurgical) and surgical procedures that can be performed early in gestation (36,37). Abortions performed early in pregnancy are associated with fewer risks of mortality and morbidity (38). The proportion of abortions performed later in pregnancy ( $\geq 16$  weeks) has varied very little since 1992. However, interest has continued in abortions performed very late in pregnancy ( $\geq 21$  weeks of gestation) (39,40).

Since 1997, medical (nonsurgical) legal induced abortion procedures have been included in this report. Since the mid-1990s, two medical (nonsurgical) regimens—methotrexate and mifepristone, each used in conjunction with misoprostol—have been tested in clinical trials and used by clinical practitioners to perform early medical (nonsurgical) abortions (37,41). Mifepristone for medical abortion was approved by the U.S. Food and Drug Administration for use and distribution in the United States in September 2000. This approval might result in medical (nonsurgical) induced abortions becoming more widespread (42,43). This report does not reflect whether any changes have occurred since approval.

In 1997, the U.S. Standard Report of Induced Termination of Pregnancy, published by CDC's National Center for Health Statistics, was revised to include a category for "medical (nonsurgical)" procedures (44). We do not know to what extent the 4,899 medical (nonsurgical) abortions reported to CDC from 21 states and New York City represent all reporting areas.

Several other considerations affect the timing of abortion. In this and previous reports, age was inversely associated with timing of abortion (7). In addition to the age of the woman, race, marital status, level of education, availability and accessibility of services, timing of confirmation of pregnancy, personal decision-making, level of fear of discovery of pregnancy and denial of pregnancy all had an impact (45,46).

From 1972 through 1998, the percentage of abortions performed by curettage (which includes dilatation and evacuation [D&E]) increased from 89% to 98% (Table 1), and the percentage of abortions performed by intrauterine instillation declined sharply, from 10% to 0.3%. From 1974 through 1998, the percentage of second-trimester abortions performed



by D&E (curettage) increased from 32% to 96%; the percentage of second-trimester abortions performed by intrauterine instillation decreased from 58% to 1.7% (47). The increase in use of D&E is likely due to the lower risk for complications associated with the procedure (48,49).

From 1972 through 1997, the annual number of deaths associated with known legal induced abortion decreased by 71% (Table 19). In 1972, 24 women died from causes known to be associated with legal abortion, and 39 women died from known illegal abortions. In 1997, seven women died as a result of legal induced abortion, and none died as a result of illegal abortion. The case-fatality rate decreased by 86% between 1972 and 1997. These rates, consistent with previously published data for the 1970s and 1980s, indicate that the risk for death from legal induced abortion continues to be extremely low (6).

The overall number, ratio, and rate of abortions from this analysis are conservative estimates because the numbers of legal induced abortions reported to CDC for 1998 were probably lower than the numbers actually performed. Totals provided by central health agencies may be lower than those obtained by direct surveys of abortion providers (50). For example, the total number of abortions reported to CDC for 1997 was approximately 12% lower than that reported for 1997 by The Alan Guttmacher Institute, a private organization that contacts abortion providers directly to obtain information concerning the total number of abortions performed (30). In addition, four states (Alaska, California, New Hampshire, and Oklahoma) did not collect abortion data and not all states collected and/or reported information (e.g., age, race, and gestational age) about women obtaining a legal induced abortion in 1998; therefore, the numbers, percentages, rates, and ratios derived from this analysis may not be representative of all women who obtained abortions.

Furthermore, abortion data are compiled and reported by CDC by reporting area where the abortion occurs rather than by reporting area where the woman resides. This inflates the numbers, ratios and rates of abortions for areas where a high proportion of legal abortions are obtained by out-of-state residents and undercounts procedures for states with limited abortion services. CDC will encourage all reporting areas to compile and report complete information regarding the residential status of women obtaining abortions.

Despite these limitations, findings from ongoing national surveillance for legal induced abortion are useful for several purposes. First, public health agencies use data from abortion surveillance to define characteristics of women who are at high risk for unintended pregnancy. Second, ongoing annual surveillance is used to monitor trends in the number, ratio,

and rate of abortions in the United States. Third, statistics regarding the number of pregnancies ending in abortion are used in conjunction with birth data and fetal death computations to estimate pregnancy rates (e.g., pregnancy rates among adolescents) (28–30) and other outcome rates. Fourth, abortion and pregnancy rates can be used to evaluate the effectiveness of family planning programs and programs for preventing unintended pregnancy. Fifth, ongoing surveillance provides data for assessing changes in clinical practice patterns related to abortion (e.g., longitudinal changes in the types of procedures and trends in gestational age at the time of abortion). Finally, numbers of abortions are used as the denominator in calculating abortion morbidity and mortality rates (38).

Welfare-reform legislation, specifically, the Personal Responsibility and Work Opportunity Reconciliation Act of 1996,<sup>5</sup> has increased interest in accurate state-based surveillance for induced abortion. In addition, some states have instituted programs that emphasize the prevention of unintended pregnancy, particularly among adolescents. To help guide these efforts, an ongoing, accurate assessment of induced abortion is needed in all states (particularly abortion data by state of residence) to determine the number and characteristics of women who obtain these procedures.

Induced abortions usually result from unintended pregnancies, which often occur despite the use of contraception (18,51–52). In 1995, data from the National Survey of Family Growth (NSFG), conducted by the National Center for Health Statistics, indicated that approximately 31% of live births were associated with unintended pregnancy (i.e., either mistimed or unwanted at conception), and 49% of all pregnancies were unintended (15,53). Unintended pregnancy is a problem not just for adolescents, unmarried women, or poor women; it is a pervasive public health problem for all women of reproductive age (15,18,53).

A reduction in unintended pregnancy, and thus abortion, will require several complex strategies. In a study of abortion patients conducted in 1994 and 1995, 58% of patients reported that they “currently used” contraception during the month of their last menstrual period; however, their use of contraception might have been inconsistent or incorrect (34). In 1995, when the most recent NSFG was conducted, approximately 29% of sexually active U.S. women who used only oral contraceptives for birth control reported that they missed a birth-control pill one or more times during the

<sup>5</sup> Section 103 of P.L. 104-193 provides for additional welfare funding for as many as five states if a) the birth rate of infants to unwed mothers is decreased and b) the rate of induced pregnancy terminations is less than the rate for 1995 (the baseline year).

3 months before their NSFG interview. In addition, approximately 33% of U.S. women who were using only coitus-dependent contraceptive methods\*\* during the 3 months before the interview used these methods inconsistently (15). At present, not all health insurance plans provide full contraceptive benefits (54). Therefore, education regarding improved contraceptive use and practices as well as access to and education regarding safe, effective, and affordable contraception and family-planning services might help reduce the incidence of unintended pregnancy and, therefore, might reduce the use of legal induced abortion in the United States (55–57).

Copies of this and other *MMWR* reports containing statistical and epidemiologic information about abortions can be obtained through the CDC Website at <[http://www.cdc.gov/nccdphp/drh/surv\\_abort.htm](http://www.cdc.gov/nccdphp/drh/surv_abort.htm)>.

#### **Acknowledgments**

The authors thank Cynthia Berg, Sonya Bowens, Elizabeth Fitch, and Jeani Chang with the Division of Reproductive Health, NCCDPHP, CDC for their critical work with data compilation, statistics, and computer programming for this surveillance project.

---

\*\*Coitus-dependent contraceptive methods include male or female condoms, diaphragm, sponge, cream, jelly, or other methods that must be used at the time intercourse occurs.

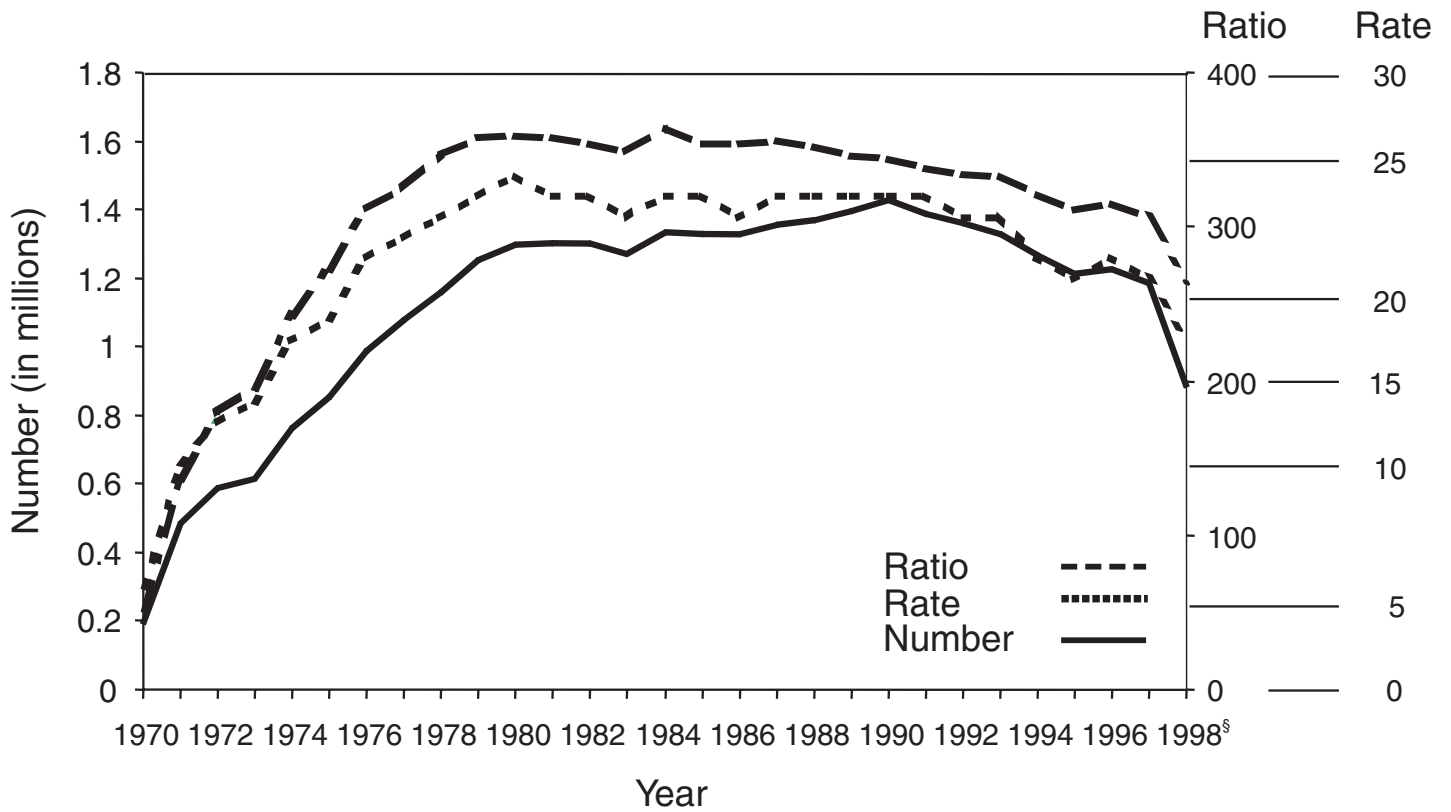
---

**References**

1. CDC. Abortion surveillance, 1977. Atlanta: US Department of Health, Education, and Welfare, Public Health Service, CDC, 1979:7.
2. CDC. Abortion surveillance, 1978. Atlanta: US Department of Health and Human Services, Public Health Service, CDC, 1980:7.
3. Henshaw SK, Feivelson DJ. Teenage abortion and pregnancy statistics by state, 1996. *Fam Plann Perspect* 2000, 32: 272–80.
4. Spitz AM, Velebil P, Koonin LM, et al. Pregnancy, abortion, and birth rates among US adolescents—1980, 1985, and 1990. *JAMA* 1996;275:989–94.
5. CDC. Abortion surveillance, 1972. Atlanta: US Department of Health, Education, and Welfare, Public Health Service, CDC, 1974:5.
6. Koonin LM, Strauss LT, Chrisman CE, Montalbano MA, Bartlett LA, Smith JC. Abortion surveillance—United States, 1996. In: *CDC Surveillance Summaries*, July 30, 1999. *MMWR* 1999;48(No. SS-4).
7. Koonin LM, Strauss LT, Chrisman CE, Parker WY. Abortion surveillance—United States, 1997. In: *CDC Surveillance Summaries*, December, 8, 2000. *MMWR* 2000;49(No. SS-11):1–43.
8. Ventura SJ, Martin JA, Curtin SC, Mathews TJ, Park MM. Births: final data for 1998. Hyattsville, MD: US Department of Health and Human Services, CDC, National Center for Health Statistics, 2000. (National vital statistics reports; vol. 48 no. 3).
9. Joffe C. Medical abortion in social context. *Am J Obstet Gynecol* 2000;183(suppl):S10–S15.
10. Pymar HC, Creinin MD. Alternatives to mifepristone regimens for medical abortion. *Am J Obstet Gynecol* 2000;183 (suppl):S54–S64.
11. Goldberg AB, Greenberg MB, Phillip D. Drug therapy: misoprostol and pregnancy. *N Engl J Med* 2001;344:38–47.
12. Koonin LM, Smith JC, Ramick M. Abortion surveillance—United States, 1990. In: *CDC Surveillance Summaries* December, 17, 1993. *MMWR* 1993;42(No. SS-6):29–57.
13. Koonin LM, Smith JC, Ramick M., Strauss LT. Abortion surveillance—United States, 1995. In: *CDC Surveillance Summaries* July, 3 1998. *MMWR* 1998;47(No. SS-2):31–68.
14. CDC. Abortion surveillance, 1975. Atlanta: US Department of Health, Education, and Welfare, Public Health Service, CDC, 1977.
15. Abma JC, Chandra A, Mosher WD, Peterson LS, Piccinino LJ. Fertility, family planning, and women's health: new data from the 1995 National Survey of Family Growth. Hyattsville, MD: US Department of Health and Human Services, Public Health Service, CDC, 1997; DHHS publication no. (PHS)97-1995. (Vital and health statistics; series 23, no. 19).
16. Henshaw SK. Factors hindering access to abortion services. *Fam Plann Perspect* 1995;27:54–9.
17. Henshaw SK. Abortion incidence and services in the United States, 1995-1996. *Fam Plann Perspect* 1998;30:263–70, 287.
18. Piccinino LJ, Mosher WD. Trends in contraceptive use in the United States: 1982-1995. *Fam Plann Perspect* 1998;30:4–10, 46.
19. Darroch JE, Singh S. Why is teenage pregnancy declining? The roles of abstinence, sexual activity and contraceptive use. New York: Alan Guttmacher Institute. Occasional Report No. 1, 1999.
20. Abma JC, Sonenstein F. Sexual activity and contraceptive practices among teenagers in the United States, 1988 and 1995. Hyattsville, MD: US Department of Health and Human Services, Public Health Service, CDC, National Center for Health Statistics 2001; DHS publication no. (PHS) 2001-1997. (Vital and health statistics; series 23, no. 21).
21. Alan Guttmacher Institute. State Policies in Brief. Available at <http://www.guttmacher.org/pubs/spib.html>
22. Ellertson C. Mandatory parental involvement in minors' abortions: effects of the laws in Minnesota, Missouri, and Indiana. *Am J Public Health* 1997;87:1367–74.
23. Henshaw SK, Singh S, Haas T. The incidence of abortion worldwide. *Int Fam Plann Perspect* 1999;25(suppl):S30–S37.
24. Statistics Canada. Therapeutic abortions, 1996 and 1997. The Daily Statistics Canada. Ottawa: Minister of Industry, 2000.
25. McElroy SW, Moore KA. Trends over time in teenage pregnancy and childbearing: the critical changes. In: Maynard RA, ed. Kids having kids: economic costs and social consequences of teen pregnancy. Washington, DC: Urban Institute Press, 1997:23–53.
26. Lawson HW, Atrash HK, Saftlas AF, Koonin LM, Ramick M, Smith JC. Abortion surveillance, United States, 1984–1985. In: *CDC Surveillance Summaries*, September 1, 1989. *MMWR* 1989; 38(No. SS-2):11–45.
27. Koonin LM, Smith JC, Ramick M. Green CA. Abortion surveillance—United States, 1992. In: *CDC Surveillance Summaries*, May 3, 1996. *MMWR* 1996;45(No. SS-3):1–36.
28. CDC. National and state-specific pregnancy rates among adolescents—United States, 1995–1997. *MMWR* 2000;49:605–611.
29. Ventura SJ, Mosher WD, Curtin SC, Abma JC, Henshaw S. Trends in pregnancies and pregnancy rates by outcome: estimates for the United States, 1976–1996. Hyattsville, MD: US Department of Health and Human Services, Public Health Services, CDC, National Center for Health Statistics, 2000; DHHS publications no. (PHS) 2000-1934. (Vital and health statistics; series 21, no. 56).
30. Ventura SJ, Mosher WD, Curtin SC, Abma JC, Henshaw S. Trends in pregnancy rates for the United States, 1976–97: An update. Hyattsville, MD: (National vital statistics report; vol 49, no. 4).
31. Martin JA, Hamilton BE, Ventura SJ. Births: Preliminary data for 2000. Hyattsville, MD: US Department of Health and Human Services, Public Health Services, CDC, National Center for Health Statistics, 2001. (National vital statistics reports; vol 49, no. 5.)
32. Ventura SJ, Curtin SC, Mathews TJ. Variations in teenage birth rates, 1991–1998: national and state trends. Hyattsville, MD: US Department of Health and Human Services, Public Health Services, CDC, National Center for Health Statistics, 2000. (National vital statistics reports; vol 48 no 6).
33. Koonin LM, Smith JC, Ramick M, Lawson HW. Abortion surveillance—United States, 1989. In: *CDC Surveillance Summaries*, September 4, 1992. *MMWR* 1992;41(No. SS-5):1–33.
34. Henshaw SK, Kost K. Abortion patients in 1994–1995: characteristics and contraceptive use. *Fam Plann Perspect* 1996;28:140–58.
35. US Census Bureau. Table ST-98-32 to 40: Population estimates for states by age, sex, race, and Hispanic origin: July 1, 1990 to July 1, 1998 (includes revised population counts).
36. Edwards J, Carson SA. New technologies permit safe abortion at less than six weeks' gestation and provide timely detection of ectopic gestation. *Am J Obstet Gynecol* 1997;176:1101–6.
37. Creinin MD, Edwards J. Early abortion: surgical and medical options. Current problems in obstetrics, gynecology and fertility 1997;20:1–32.
38. Lawson HW, Frye A, Atrash HK, Smith JC, Shulman HB, Ramick M. Abortion mortality, United States, 1972 through 1987. *Am J Obstet Gynecol* 1994;171:1365–72.
39. Alan Guttmacher Institute. Late-term abortions: legal considerations. New York and Washington, DC: Alan Guttmacher Institute, 1997:1–4.

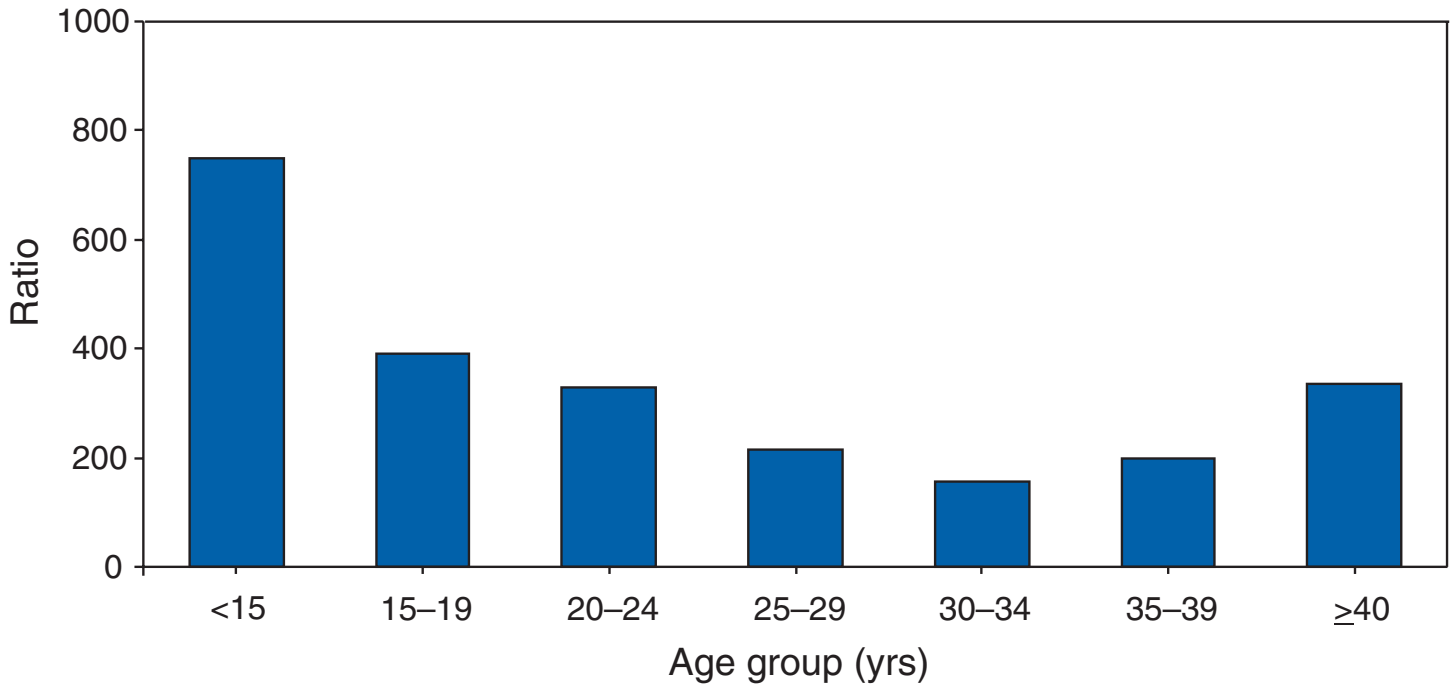
40. Epner JEG, Jonas HS, Seckinger DL. Late-term abortion. *JAMA* 1998;280:724–9.
41. Kahn JG, Becker BJ, Macisaa L, et al. The efficacy of medical abortion: A meta-analysis. *Contraception* 2000;61:29–40.
42. Joffe C. Reactions to medical abortion among providers of surgical abortion: an early snapshot. *Fam Plann Perspect* 1999;31:35–8.
43. Koenig JD, Tapias MP, Hoff T, Stewart FH. Are US health professionals likely to prescribe mifepristone or methotrexate? *J Am Med Women's Assoc* 2000;55(Suppl):155–60.
44. CDC. Handbook on the reporting of induced termination of pregnancy. Hyattsville, MD: US Department of Health and Human Services, CDC, National Center for Health Statistics, 1998; DHHS publication no. (PHS)98-1117;1–18.
45. Fielding WL, Sachtleben MR, Friedman LM, Friedman EA. Comparison of women seeking early and late abortion. *Am J Obstet Gynecol* 1978;131:304–10.
46. Tietze C, Henshaw SK. Induced abortion: a world review. 6th ed. New York: Alan Guttmacher Institute, 1986:29–52.
47. CDC. Abortion surveillance, 1974. Atlanta: US Department of Health, Education, and Welfare, Public Health Service, CDC, 1976:1–49.
48. Cates W Jr, Schulz KF, Grimes DA, et al. Dilatation and evacuation procedures and second-trimester abortion: the role of physician skill and hospital setting. *JAMA* 1982;248:559–63.
49. Grimes DA. Second-trimester abortions in the United States. *Fam Plann Perspect* 1984;16:260–6.
50. Saul R. Abortion reporting in the United States: an examination of the federal–state partnership. *Fam Plann Perspect* 1998;30:244–7.
51. Fu H, Darroch JA, Haas T, Ranjit N. Contraceptive failure rates: new estimates from the 1995 National Survey of Family Growth. *Fam Plann Persp* 31:56–63. Corrected data are shown in Internet release: <http://www.agi-usa.org/pubs/journals/3105699.html>.
52. Torres A, Forrest JD. Why do women have abortions? *Fam Plann Perspect* 1988;20:169–76.
53. Henshaw SK. Unintended pregnancy in the United States. *Fam Plann Perspect* 1998;30:24–9,46.
54. Gold RB, Darroch JE, Frost JJ. Mainstreaming contraceptive services in managed care—five states' experiences. *Fam Plann Perspect* 1998;30:204–11.
55. Westoff CF. Contraceptive paths toward the reduction of unintended pregnancy and abortion. *Fam Plann Perspect* 1988;20:4–13.
56. Forrest JD. Epidemiology of unintended pregnancy and contraceptive use. *Am J Obstet Gynecol* 1994;170(suppl):1485–8.
57. Gonen JS. Value purchasing: investing in women's health. Washington DC: Jacob's Institute of Women's Health. 2000.

FIGURE 1. Number, ratio,\* and rate† of legal abortions performed, by year—United States, 1970–1998



\* Number of abortions per 1,000 live births.  
 † Number of abortions per 1,000 women aged 15–44 years.  
 § 1998 data are from 48 reporting areas. See Tables 1 and 2.

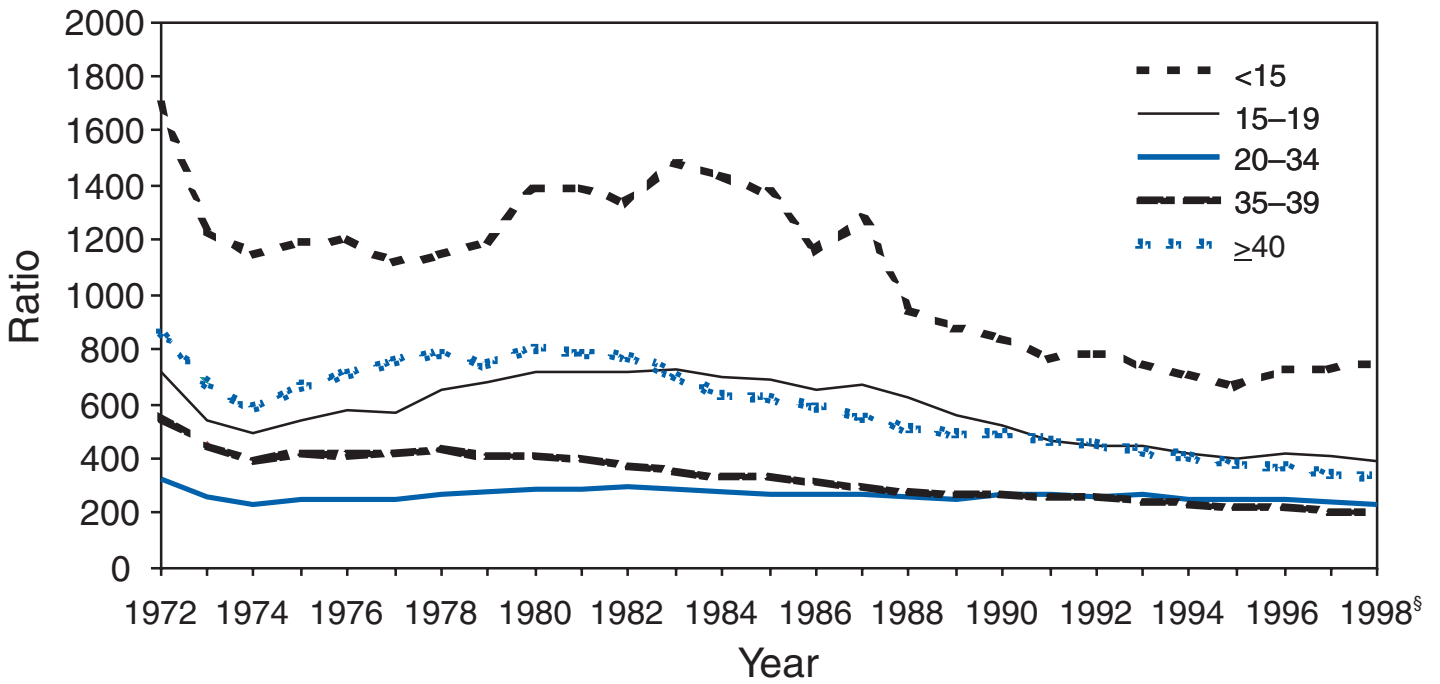
FIGURE 2. Abortion ratio,\* by age group of women who obtained a legal abortion—selected states,† United States, 1998



\* Number of abortions per 1,000 live births.

† Data from 45 states, the District of Columbia, and New York City.

FIGURE 3. Abortion ratio,\* by age group† of women who obtained a legal abortion—selected states, United States, 1972–1998§

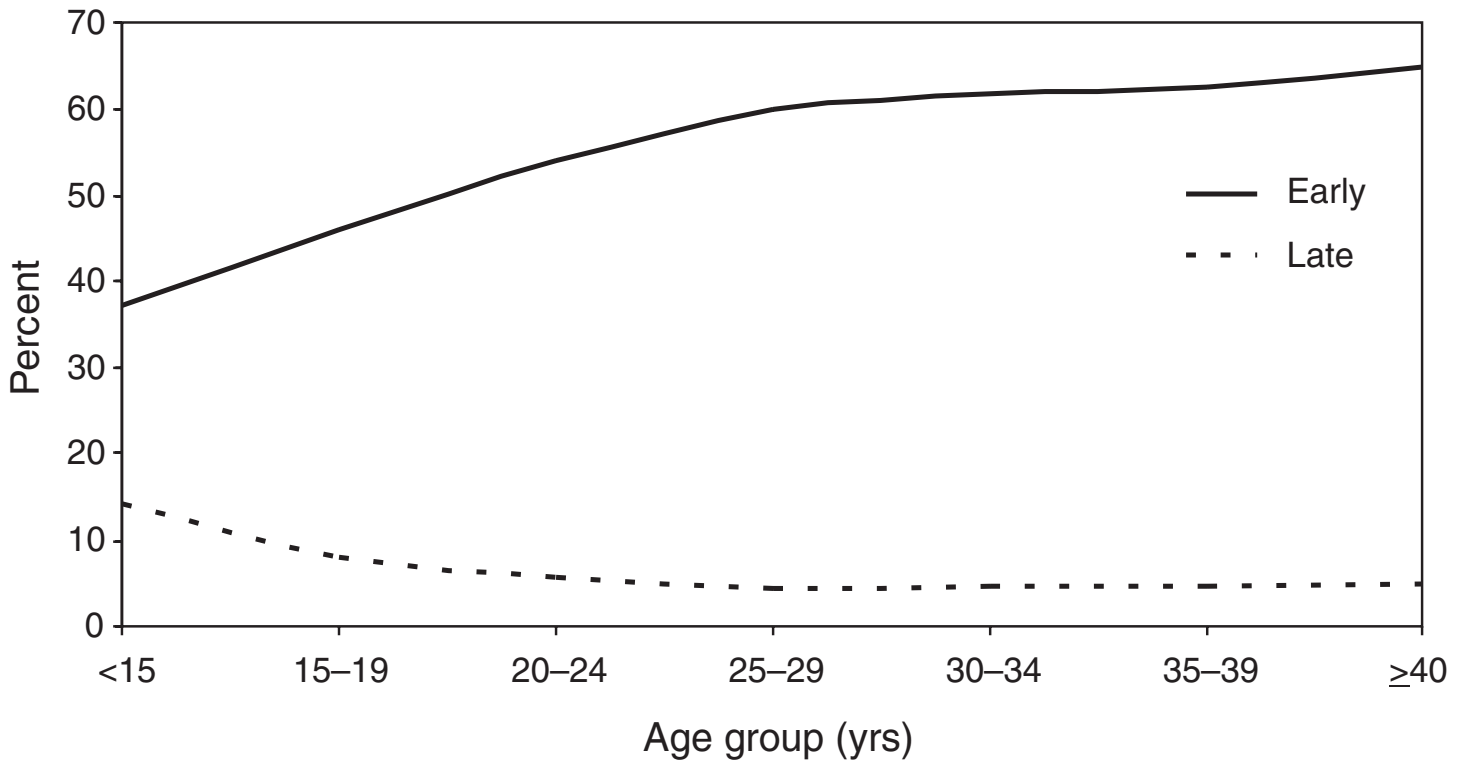


\* Number of abortions per 1,000 live births.

† In years.

§ Data for 1998 are from 45 states, the District of Columbia, and New York City.

FIGURE 4. Percentage\* of women who obtained early† or late‡ abortions, by age group of women—selected states,¶ United States, 1998



\* Based on total known weeks of gestation.

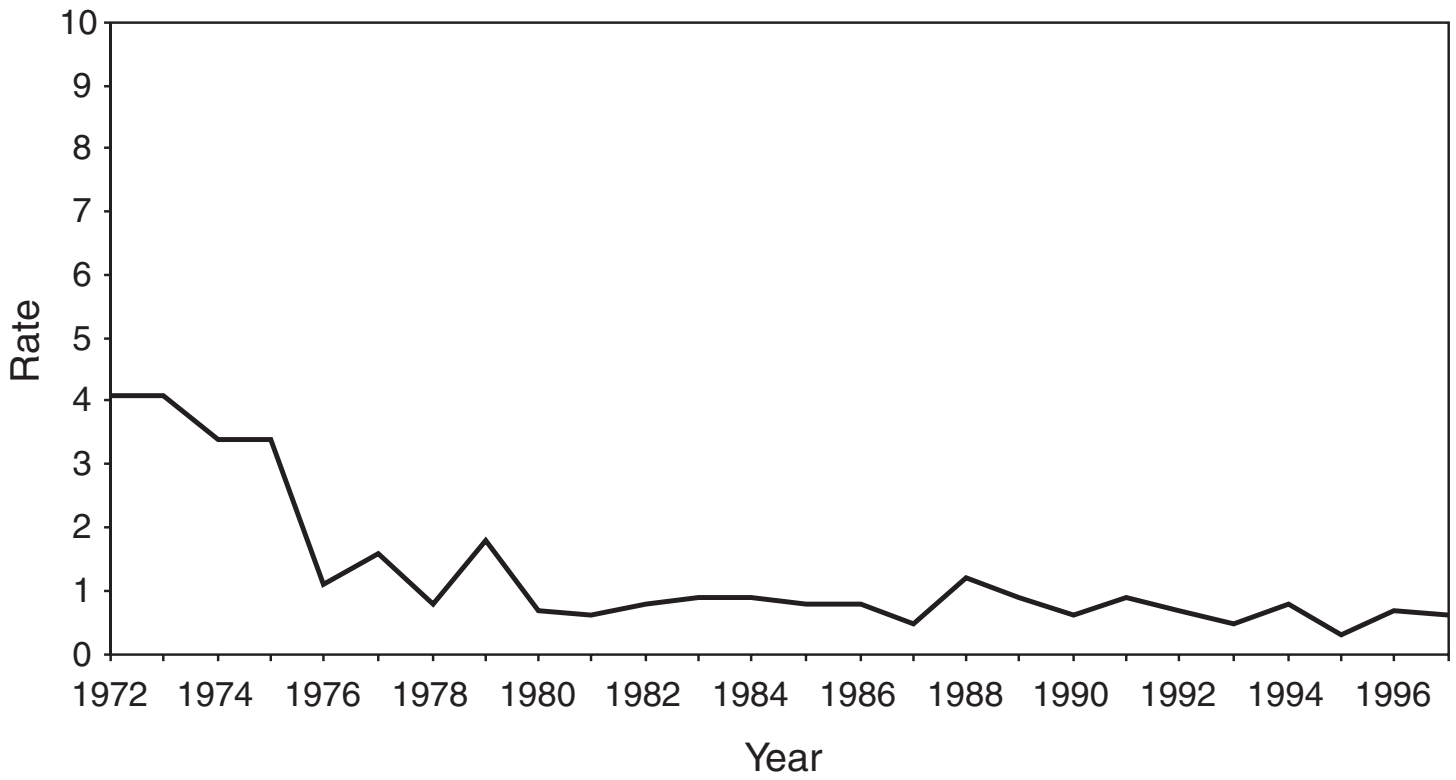
†  $\leq 8$  weeks of gestation.

‡  $\geq 16$  weeks of gestation.

¶ Data from 41 states and New York City; excludes one state where weeks of gestation was unknown for  $>15\%$  of women.



FIGURE 5. Case-fatality rate\* for legal abortions, by year—United States, 1972–1997



\*Known legal induced abortion-related deaths per 100,000 legal induced abortions.

**TABLE 1. Characteristics of women who obtained legal abortions—United States, selected years, 1972—1998**

Characteristic	1972	1976	1980	1985	1990	1992	1993	1994	1995	1996	1997	1998
<b>Reported no. of legal abortions*</b>	586,760	988,267	1,297,606	1,328,570	1,429,247	1,359,146	1,330,414	1,267,415	1,210,883	1,225,937	1,186,039	884,273
<b>Reported no. of legal abortions excluding AK, CA, NH, OK†</b>									908,243	934,549	900,171	884,273
	<b>Percent distribution§</b>											
<b>Residence</b>												
In-state/area	56.2	90.0	92.6	92.4	91.8	92.1	91.4	91.5	91.5	91.7	91.9	91.5
Out-of-state/area	43.8	10.0	7.4	7.6	8.2	7.9	8.6	8.5	8.5	8.3	8.1	8.5
<b>Age (yrs)</b>												
≤19	32.6	32.1	29.2	26.3	22.4	20.1	20.0	20.2	20.1	20.3	20.1	19.8
20–24	32.5	33.3	35.5	34.7	33.2	34.5	34.4	33.5	32.5	31.8	31.7	31.8
≥25	34.9	34.6	35.3	39.0	44.4	45.4	45.6	46.3	47.4	47.9	48.2	48.4
<b>Race¶</b>												
White	77.0	66.6	69.9	66.7	64.8	61.6	60.9	60.6	59.6	59.1	58.4	58.8
Black	23.0	33.4	30.1	29.8	31.9	33.9	34.9	34.7	35.0	35.3	35.9	35.4
Other**	—	—	—	3.5	3.3	4.5	4.2	4.7	5.4	5.6	5.7	5.8
<b>Ethnicity</b>												
Hispanic	—	—	—	—	11.4	15.0	14.5	14.1	15.1	15.7	15.6	16.7
Non-Hispanic	—	—	—	—	88.6	85.0	85.5	85.9	84.9	84.3	84.4	83.3
<b>Marital status</b>												
Married	29.7	24.6	23.1	19.3	21.7	20.8	20.4	19.9	19.7	19.6	19.0	18.9
Unmarried	70.3	75.4	76.9	80.7	78.3	79.2	79.6	80.1	80.3	80.4	81.0	81.1
<b>No. of live births††</b>												
0	49.4	47.7	58.4	56.3	49.2	45.9	46.5	46.2	45.2	44.2	42.2	41.1
1	18.2	20.7	19.4	21.6	24.4	25.9	25.8	25.9	26.5	26.8	27.6	27.9
2	13.3	15.4	13.7	14.5	16.9	18.0	17.8	17.8	18.0	18.4	19.1	19.6
3	8.7	8.3	5.3	5.1	6.1	6.7	6.6	6.7	6.8	7.0	7.3	7.5
≥4	10.4	7.9	3.2	2.5	3.4	3.5	3.3	3.4	3.5	3.6	3.8	3.9
<b>Type of procedure</b>												
Curettage	88.6	92.8	95.5	97.5	98.9	99.0	99.1	99.1	98.9	98.8	98.3	98.3
Suction curettage	65.2	82.6	89.8	94.6	97.2	95.8	95.5	96.5	96.6	96.5	97.3	96.8
Sharp curettage	23.4	10.2	5.7	2.9	1.7	3.2	3.6	2.6	2.3	2.3	1.0	1.5
Intrauterine instillation	10.4	6.0	3.1	1.7	0.8	0.6	0.6	0.5	0.5	0.4	0.4	0.3
Other§§	1.0	1.2	1.4	0.8	0.3	0.4	0.3	0.4	0.6	0.8	1.3	1.4
<b>Weeks of gestation</b>												
≤8	34.0	47.0	51.7	50.3	51.6	52.1	52.3	53.7	54.0	54.6	55.4	55.7
≤6	—	—	—	—	—	14.3¶¶	14.7***	15.7†††	15.7†††	16.3§§§	17.6¶¶¶	19.2****
7	—	—	—	—	—	15.6¶¶	16.2***	16.5†††	17.1†††	17.4§§§	18.1¶¶¶	17.8****
8	—	—	—	—	—	22.2¶¶	21.6***	21.6†††	21.2†††	21.0§§§	19.6¶¶¶	18.8****
9–10	30.7	28.1	26.2	26.6	25.3	24.2	24.4	23.5	23.1	22.6	22.0	21.5
11–12	17.5	14.4	12.2	12.5	11.7	12.1	11.6	10.9	10.9	11.0	10.7	10.9
13–15	8.4	4.5	5.1	5.9	6.4	6.0	6.3	6.3	6.3	6.0	6.2	6.4
16–20	8.2	5.1	3.9	3.9	4.0	4.2	4.1	4.3	4.3	4.3	4.3	4.1
≥21	1.2	0.9	0.9	0.8	1.0	1.4	1.3	1.3	1.4	1.5	1.4	1.4

\* See Table 2 for number of areas reporting each year.

† With one small exception, no characteristics were available for the excluded states in previous years.

§ Based on known values in data from all areas reporting a given characteristic with no more than 15% unknowns. The number of areas reporting a given characteristic varied. For 1998, the number of areas included for residence was 46; age, 47; race, 39; ethnicity, 25; marital status, 38; number of live births, 40; type of procedure, 43; and weeks of gestation, 44.

¶ Black race reported as black and other races through 1984. From 1990 through 1997, one state included "other" races with blacks.

\*\* Includes all other races.

†† For 1972 and 1976, data indicate number of living children.

§§ Includes hysterectomy and hysterotomy, procedures reported as "other," and medical (nonsurgical) procedures. For 1998, the number of medical (nonsurgical) procedures reported was 4,893.

¶¶ Data were for 36 of 39 areas reporting weeks of gestation.

\*\*\* Data were for 38 of 41 areas reporting weeks of gestation.

††† Data were for 38 of 40 areas reporting weeks of gestation.

§§§ Data were for 37 of 40 areas reporting weeks of gestation.

¶¶¶ Data were for 40 of 42 areas reporting weeks of gestation.

\*\*\*\* Data were for 42 of 44 areas reporting weeks of gestation.

— Not available.

**TABLE 2. Number, ratio,\* and rate† of legal abortions and source of reporting for all reporting areas and for the 48 areas that reported in 1998, by year — United States, 1970–1998**

Year	No. of legal abortions	Ratio*	Rate†	No. of areas reporting	
				Central health agency§	Hospitals/facilities¶
<b>All reporting areas</b>					
1970	193,491	52	5	18	7
1971	485,816	137	11	19	7
1972	586,760	180	13	21	8
1973	615,831	196	14	26	26
1974	763,476	242	17	37	15
1975	854,853	272	18	39	13
1976	988,267	312	21	41	11
1977	1,079,430	325	22	46	6
1978	1,157,776	347	23	48	4
1979	1,251,921	358	24	47	5
1980	1,297,606	359	25	47	5
1981	1,300,760	358	24	46	6
1982	1,303,980	354	24	46	6
1983	1,268,987	349	23	46	6
1984	1,333,521	364	24	44	8
1985	1,328,570	354	24	44	8
1986	1,328,112	354	23	43	9
1987	1,353,671	356	24	45	7
1988	1,371,285	352	24	45	7
1989	1,396,658	346	24	45	7
1990	1,429,247	344	24	46	6
1991	1,388,937	338	24	47	5
1992	1,359,146	334	23	47	5
1993	1,330,414	333	23	47	5
1994	1,267,415	321	21	47	5
1995	1,210,883	311	20	48	4
1996	1,225,937	315**	21	48	4
1997	1,186,039	306	20	48	4
1998	884,273	264	17	48	0
<b>48 reporting areas††</b>					
1995	908,243	277	18	47	1
1996	934,549	285**	18	47	1
1997	900,171	274	17	46	2
1998	884,273	264	17	48	0

\* Number of abortions per 1,000 live births.

† Number of abortions per 1,000 women aged 15–44 years.

§ State health departments and the health departments of New York City and the District of Columbia.

¶ Hospitals and/or other medical facilities in state.

\*\* Beginning in 1996, the ratio was based on births reported by CDC's National Center for Health Statistics.

†† Without Alaska, California, New Hampshire, and Oklahoma, which did not report number of legal abortions for 1998.

**TABLE 3. Reported number,\* ratio,† and rate‡ of legal abortions by residence and occurrence, and percentage of abortions obtained by out-of-state residents,¶ by state of occurrence — United States, 1998**

State	Residence			Occurrence			Percentage of legal abortions obtained by out-of-state residents
	No. of legal abortions	Ratio	Rate	No. of legal abortions	Ratio	Rate	
Alabama	12,161	196	12	13,386	216	14	17.0
Alaska**	—	—	—	—	—	—	—
Arizona††	14,970	191	15	14,747	188	15	1.0
Arkansas	5,680	154	10	5,634	153	10	11.3
California**	—	—	—	—	—	—	—
Colorado	6,794	114	8	7,493	126	8	11.1
Connecticut	12,963	296	18	12,939	295	18	4.2
Delaware	3,716	351	22	5,455	516	32	35.6
Dist. of Columbia	3,402	443	27	8,336	—§§	66	64.1
Florida¶¶	—	—	—	82,335	421	27	—
Georgia	29,784	243	16	32,349	264	18	9.6
Hawaii	4,157	236	16	4,162	237	17	0.2
Idaho	1,651	85	6	888	46	3	2.9
Illinois	45,893	251	17	49,403	271	18	9.2
Indiana	14,843	174	11	12,443	146	9	3.7
Iowa***	7,318	196	12	6,214***	167	10	—
Kansas	6,464	168	11	11,495	299	20	45.1
Kentucky	6,174	114	7	6,706	123	8	20.8
Louisiana¶¶	—	—	—	11,351	170	11	—
Maine	2,348	171	8	2,408	175	9	2.7
Maryland	15,052	209	13	10,458	145	9	4.2
Massachusetts††	25,710	316	18	27,714	340	20	6.2
Michigan	27,606	207	12	28,107	210	13	3.6
Minnesota	13,551	208	13	14,423	221	14	9.4
Mississippi	7,250	169	12	3,955	92	6	4.2
Missouri	16,149	214	13	9,089	121	8	8.9
Montana	2,172	201	12	2,573	238	14	16.0
Nebraska	4,153	176	12	5,140	218	14	22.0
Nevada	5,816	203	16	6,539	228	18	11.3
New Hampshire**	—	—	—	—	—	—	—
New Jersey	35,886	313	20	35,686	312	20	5.5
New Mexico	6,001	220	16	5,395	197	14	4.3
New York	135,498	525	34	139,646	541	35	—
City	97,455	813	—	103,982†††	867	—	6.5§§§
State	38,043¶¶¶	275	—	35,664	258	—	6.2§§§
North Carolina	29,976	268	18	33,105	296	20	12.3
North Dakota	977	123	7	1,242	157	9	31.7
Ohio	35,528	233	14	37,479	245	15	7.1
Oklahoma**	—	—	—	—	—	—	—
Oregon	12,747	282	18	14,344	317	20	12.4
Pennsylvania	38,382	263	15	35,617	244	14	4.7
Rhode Island	3,857	306	18	4,601	365	21	18.4
South Carolina	11,439	212	13	8,801	163	10	6.5
South Dakota	1,011	98	6	674	66	4	19.6
Tennessee	17,428	225	14	18,849	244	15	17.0
Texas	78,970	231	18	81,686	239	18	3.6
Utah	3,396	75	7	3,487	77	7	7.4
Vermont	1,538	234	11	1,870	284	14	19.1
Virginia	28,190	299	18	26,115	277	16	5.8
Washington	25,835	324	20	25,327	318	20	4.4
West Virginia	3,032	146	8	2,738	132	7	11.3
Wisconsin	12,707	188	11	11,681	173	10	3.1
Wyoming	902	144	9	188	30	2	6.9
Other residence****	3,744	—	—	NA	NA	NA	NA
<b>Total known</b>	<b>782,821</b>			<b>884,273</b>	<b>264</b>	<b>17</b>	<b>8.6</b>

**TABLE 3. (Cont'd) Reported number,\* ratio,† and rate§ of legal abortions by residence and occurrence, and percentage of abortions obtained by out-of-state residents,¶ by state of occurrence — United States, 1998**

State	Residence			Occurrence			Percentage of legal abortions obtained by out-of-state residents
	No. of legal abortions	Ratio	Rate	No. of legal abortions	Ratio	Rate	
Unknown residence <sup>†††</sup>	5,102						
Not reported by residence <sup>§§§§</sup>	96,350						
<b>Total</b>	<b>884,273</b>	<b>264</b>	<b>17</b>				

\* Abortion data reported by central health agencies.

† Number of abortions per 1,000 live births. **Source:** Number of live births obtained from Ventura SJ, Martin JA, Curtin SC, Mathews TJ, Park, M. Births: final data for 1998. Atlanta, GA: US Department of Health and Human Services, CDC, National Center for Health Statistics, 2000. Natl Vital Stat Rep; vol. 48, no. 3.

§ Number of abortions per 1,000 women aged 15-44 years. **Source:** Number of women in this age group was obtained from the US Census Bureau. Table ST-98-39: Population estimates for states by age, sex, race, and Hispanic origin: July 1, 1998 (includes revised population counts). Washington, DC: US Census Bureau, Population Division, Population Estimates Program.

¶ Based on number of abortions for which residence of women was known.

\*\* State did not report abortions.

†† Reported numbers of abortions for in-state residents without detailed information regarding out-of-state residents.

§§ >1000 abortions per 1000 live births.

¶¶ State did not report abortions by residence; therefore, no information is available regarding in-state residents.

\*\*\* Reported for own residents only.

††† Reported by the New York City Department of Health.

§§§ Percentage based on number of abortions reported as "out of reporting area."

¶¶¶ Abortions for women whose state of residence was listed as "New York."

\*\*\*\* Women whose residence was listed as Canada, Mexico or "Other."

†††† Reported as unknown residence (3,341) or out-of-state residence, but not specified (1,761).

§§§§ Total for states that did not report abortions by residence.

— Not available; NA, not applicable.

**TABLE 4. Reported legal abortions, by age group of women who obtained an abortion and state of occurrence — selected states,\* United States, 1998**

State	Age group (yrs)												Total					
	<15		15–19		20–24		25–29		30–34		35–39			≥40		Unknown		
	No.	(%)	No.	(%)	No.	(%)	No.	(%)	No.	(%)	No.	(%)		No.	(%)	No.	(%)†	
Alabama	135	(1.0)	2,601	(19.4)	4,782	(35.7)	3,133	(23.4)	1,528	(11.4)	922	(6.9)	272	(2.0)	13	(0.1)	<b>13,386</b>	<b>(100.0)</b>
Arizona	78	(0.5)	2,678	(18.2)	4,113	(27.9)	2,921	(19.8)	1,739	(11.8)	1,129	(7.7)	370	(2.5)	1,719	(11.7)	<b>14,747</b>	<b>(100.0)</b>
Arkansas	71	(1.3)	1,258	(22.3)	1,947	(34.6)	1,184	(21.0)	636	(11.3)	358	(6.4)	131	(2.3)	49	(0.9)	<b>5,634</b>	<b>(100.0)</b>
Colorado	58	(0.8)	1,721	(23.0)	2,368	(31.6)	1,494	(19.9)	969	(12.9)	640	(8.5)	232	(3.1)	11	(0.1)	<b>7,493</b>	<b>(100.0)</b>
Connecticut	75	(0.6)	2,648	(20.5)	4,056	(31.3)	2,912	(22.5)	1,806	(14.0)	1,019	(7.9)	301	(2.3)	122	(0.9)	<b>12,939</b>	<b>(100.0)</b>
Delaware	44	(0.8)	1,316	(24.1)	1,746	(32.0)	1,168	(21.4)	687	(12.6)	376	(6.9)	118	(2.2)	0	(0.0)	<b>5,455</b>	<b>(100.0)</b>
Dist. of Columbia	72	(0.9)	1,757	(21.1)	2,616	(31.4)	2,044	(24.5)	947 <sup>§</sup>	(11.4)	537 <sup>§</sup>	(6.4)	204 <sup>§</sup>	(2.4)	159	(1.9)	<b>8,336</b>	<b>(100.0)</b>
Georgia	299	(0.9)	5,798	(17.9)	10,035	(31.0)	8,329	(25.7)	4,677	(14.5)	2,510	(7.8)	701	(2.2)	0	(0.0)	<b>32,349</b>	<b>(100.0)</b>
Hawaii	41	(1.0)	961	(23.1)	1,261	(30.3)	860	(20.7)	540	(13.0)	347	(8.3)	149	(3.6)	3	(0.1)	<b>4,162</b>	<b>(100.0)</b>
Idaho	8	(0.9)	221	(24.9)	272	(30.6)	159	(17.9)	114	(12.8)	87	(9.8)	26	(2.9)	1	(0.1)	<b>888</b>	<b>(100.0)</b>
Illinois <sup>¶</sup>	406	(0.8)	10,147	(20.5)	15,865	(32.1)	11,539	(23.4)	6,464	(13.1)	3,582	(7.3)	1,145	(2.3)	255	(0.5)	<b>49,403</b>	<b>(100.0)</b>
Indiana	86	(0.7)	2,481	(19.9)	4,376	(35.2)	2,687	(21.6)	1,456	(11.7)	927	(7.4)	294	(2.4)	136	(1.1)	<b>12,443</b>	<b>(100.0)</b>
Iowa**	48	(0.8)	1,428	(23.0)	2,022	(32.5)	1,318	(21.2)	673	(10.8)	542	(8.7)	142	(2.3)	41	(0.7)	<b>6,214</b>	<b>(100.0)</b>
Kansas	112	(1.0)	2,569	(22.3)	3,708	(32.3)	2,476	(21.5)	1,429	(12.4)	904	(7.9)	295	(2.6)	2	(0.0)	<b>11,495</b>	<b>(100.0)</b>
Kentucky	84	(1.3)	1,294	(19.3)	2,350	(35.0)	1,511	(22.5)	808	(12.0)	465	(6.9)	136	(2.0)	58	(0.9)	<b>6,706</b>	<b>(100.0)</b>
Louisiana	120	(1.1)	2,238	(19.7)	3,818	(33.6)	2,538	(22.4)	1,386	(12.2)	829	(7.3)	277	(2.4)	145	(1.3)	<b>11,351</b>	<b>(100.0)</b>
Maine	12	(0.5)	574	(23.8)	736	(30.6)	492	(20.4)	292	(12.1)	202	(8.4)	75	(3.1)	25	(1.0)	<b>2,408</b>	<b>(100.0)</b>
Maryland	102	(1.0)	1,953	(18.7)	3,210	(30.7)	2,612	(25.0)	1,491	(14.3)	862	(8.2)	228	(2.2)	0	(0.0)	<b>10,458</b>	<b>(100.0)</b>
Massachusetts	141	(0.5)	4,810	(17.4)	7,994	(28.8)	6,169	(22.3)	4,093	(14.8)	2,446	(8.8)	866	(3.1)	1,195	(4.3)	<b>27,714</b>	<b>(100.0)</b>
Michigan	185	(0.7)	5,432	(19.3)	8,950	(31.8)	6,771	(24.1)	3,762	(13.4)	2,197	(7.8)	694	(2.5)	116	(0.4)	<b>28,107</b>	<b>(100.0)</b>
Minnesota	70	(0.5)	2,516	(17.4)	4,427	(30.7)	3,368	(23.4)	2,101	(14.6)	1,265	(8.8)	472	(3.3)	204	(1.4)	<b>14,423</b>	<b>(100.0)</b>
Mississippi	37	(0.9)	783	(19.8)	1,468	(37.1)	892	(22.6)	423	(10.7)	277	(7.0)	72	(1.8)	3	(0.1)	<b>3,955</b>	<b>(100.0)</b>
Missouri	62	(0.7)	1,660	(18.3)	2,803	(30.8)	2,113	(23.2)	1,305	(14.4)	884	(9.7)	259	(2.8)	3	(0.0)	<b>9,089</b>	<b>(100.0)</b>
Montana	16	(0.6)	597	(23.2)	850	(33.0)	480	(18.7)	293	(11.4)	255	(9.9)	78	(3.0)	4	(0.2)	<b>2,573</b>	<b>(100.0)</b>
Nebraska	36	(0.7)	1,126	(21.9)	1,675	(32.6)	1,122	(21.8)	601	(11.7)	439	(8.5)	141	(2.7)	0	(0.0)	<b>5,140</b>	<b>(100.0)</b>
Nevada	38	(0.6)	1,185	(18.1)	1,780	(27.2)	1,517	(23.2)	972	(14.9)	658	(10.1)	190	(2.9)	199	(3.0)	<b>6,539</b>	<b>(100.0)</b>
New Jersey	221	(0.6)	6,753	(18.9)	11,358	(31.8)	8,445	(23.7)	5,006	(14.0)	2,943	(8.2)	947	(2.7)	13	(0.0)	<b>35,686</b>	<b>(100.0)</b>
New Mexico	43	(0.8)	1,163	(21.6)	1,660	(30.8)	1,143	(21.2)	696	(12.9)	449	(8.3)	171	(3.2)	70	(1.3)	<b>5,395</b>	<b>(100.0)</b>
New York	935	(0.7)	24,552	(17.6)	40,768	(29.2)	33,084	(23.7)	22,536	(16.1)	13,097	(9.4)	4,218	(3.0)	456	(0.3)	<b>139,646</b>	<b>(100.0)</b>
City	700	(0.7)	16,922	(16.3)	29,736	(28.6)	25,504	(24.5)	17,662	(17.0)	9,938	(9.6)	3,156	(3.0)	364	(0.4)	<b>103,982</b>	<b>(100.0)</b>
State	235	(0.7)	7,630	(21.4)	11,032	(30.9)	7,580	(21.3)	4,874	(13.7)	3,159	(8.9)	1,062	(3.0)	92	(0.3)	<b>35,664</b>	<b>(100.0)</b>
North Carolina	264	(0.8)	6,285	(19.0)	10,949	(33.1)	7,767	(23.5)	4,004	(12.1)	2,272	(6.9)	629	(1.9)	935	(2.8)	<b>33,105</b>	<b>(100.0)</b>
North Dakota	3	(0.2)	286	(23.0)	450	(36.2)	202	(16.3)	166	(13.4)	92	(7.4)	43	(3.5)	0	(0.0)	<b>1,242</b>	<b>(100.0)</b>
Ohio	334	(0.9)	7,395	(19.7)	12,447	(33.2)	8,973	(23.9)	4,528	(12.1)	2,859	(7.6)	918	(2.4)	25	(0.1)	<b>37,479</b>	<b>(100.0)</b>
Oregon	104	(0.7)	3,048	(21.2)	4,380	(30.5)	3,180	(22.2)	1,933	(13.5)	1,220	(8.5)	432	(3.0)	47	(0.3)	<b>14,344</b>	<b>(100.0)</b>
Pennsylvania	313	(0.9)	6,538	(18.4)	11,335	(31.8)	8,230	(23.1)	5,116	(14.4)	3,053	(8.6)	1,032	(2.9)	0	(0.0)	<b>35,617</b>	<b>(100.0)</b>
Rhode Island	21	(0.5)	868	(18.9)	1,470	(31.9)	1,018	(22.1)	615	(13.4)	458	(10.0)	147	(3.2)	4	(0.1)	<b>4,601</b>	<b>(100.0)</b>
South Carolina	70	(0.8)	1,732	(19.7)	2,853	(32.4)	2,081	(23.6)	1,217	(13.8)	628	(7.1)	220	(2.5)	0	(0.0)	<b>8,801</b>	<b>(100.0)</b>
South Dakota	7	(1.0)	168	(24.9)	220	(32.6)	130	(19.3)	71	(10.5)	60	(8.9)	18	(2.7)	0	(0.0)	<b>674</b>	<b>(100.0)</b>
Tennessee	146	(0.8)	3,705	(19.7)	6,343	(33.7)	4,426	(23.5)	2,394	(12.7)	1,362	(7.2)	394	(2.1)	79	(0.4)	<b>18,849</b>	<b>(100.0)</b>
Texas	336	(0.4)	13,353	(16.3)	25,763	(31.5)	19,104	(23.4)	10,535	(12.9)	6,361	(7.8)	2,307	(2.8)	3,927	(4.8)	<b>81,686</b>	<b>(100.0)</b>
Utah	25	(0.7)	663	(19.0)	1,096	(31.4)	791	(22.7)	531	(15.2)	273	(7.8)	103	(3.0)	5	(0.1)	<b>3,487</b>	<b>(100.0)</b>
Vermont	13	(0.7)	414	(22.1)	614	(32.8)	347	(18.6)	235	(12.6)	184	(9.8)	63	(3.4)	0	(0.0)	<b>1,870</b>	<b>(100.0)</b>
Virginia	183	(0.7)	4,592	(17.6)	8,151	(31.2)	6,048	(23.2)	3,821	(14.6)	2,358	(9.0)	805	(3.1)	157	(0.6)	<b>26,115</b>	<b>(100.0)</b>
Washington	137	(0.5)	5,175	(20.4)	7,632	(30.1)	5,723	(22.6)	3,641	(14.4)	2,234	(8.8)	775	(3.1)	10	(0.0)	<b>25,327</b>	<b>(100.0)</b>
West Virginia	14	(0.5)	580	(21.2)	958	(35.0)	646	(23.6)	293	(10.7)	193	(7.0)	54	(2.0)	0	(0.0)	<b>2,738</b>	<b>(100.0)</b>
Wisconsin**	68	(0.6)	2,191	(19.4)	3,656	(32.3)	2,610	(23.1)	1,542	(13.6)	943	(8.3)	311	(2.7)	1	(0.0)	<b>11,322</b>	<b>(100.0)</b>
Wyoming	1	(0.5)	43	(22.9)	59	(31.4)	31	(16.5)	27	(14.4)	20	(10.6)	7	(3.7)	0	(0.0)	<b>188</b>	<b>(100.0)</b>
<b>Total</b>	<b>5,674</b>	<b>(0.7)</b>	<b>151,256</b>	<b>(18.9)</b>	<b>251,390</b>	<b>(31.4)</b>	<b>185,788</b>	<b>(23.2)</b>	<b>110,099</b>	<b>(13.7)</b>	<b>65,718</b>	<b>(8.2)</b>	<b>21,462</b>	<b>(2.7)</b>	<b>10,192</b>	<b>(1.3)</b>	<b>801,579</b>	<b>(100.0)</b>
Abortion ratio <sup>††</sup>	750		391		329		216		157		200		338				254	
Abortion rate <sup>§§</sup>	2		20		36		25		14		7		2				16	

\* Data from 45 states, the District of Columbia, and New York City.

† Percentages might not add to 100.0 because of rounding.

§ Summary data reported for women ≥30 years of age redistributed across component age groups.

¶ Unpublished small numbers distributed as the known numbers using data from public use tape.

\*\* Includes residents only.

†† Calculated as the number of legal abortions obtained by women in a given age group per 1,000 live births to women in the same age group for these states. For each state, data for women of unknown age were distributed according to the known age distribution for that state.

§§ Calculated as the number of legal abortions obtained by women in a given age group per 1,000 women in the same age group for these states. Women aged 13–14 years were used for the denominator for the &lt;15 years age group, and women aged 40–44 years were used for the denominator for the ≥40 years age group. For each state, data for women of unknown age were distributed according to the known age distribution for that state.

**TABLE 5. Reported legal abortions obtained by adolescents, by known age and state of occurrence — selected states,\* United States, 1998**

State	Age (yrs)						Total							
	<15		15		16		17		18		19		Total	
	No.	(%)	No.	(%)	No.	(%)	No.	(%)	No.	(%)	No.	(%)	No.	(%)†
Alabama	135	(4.9)	202	(7.4)	337	(12.3)	440	(16.1)	773	(28.3)	849	(31.0)	2,736	(100.0)
Arizona	78	(2.8)	185	(6.7)	348	(12.6)	519	(18.8)	825	(29.9)	801	(29.1)	2,756	(100.0)
Arkansas	71	(5.3)	89	(6.7)	159	(12.0)	225	(16.9)	400	(30.1)	385	(29.0)	1,329	(100.0)
Colorado	58	(3.3)	116	(6.5)	251	(14.1)	357	(20.1)	503	(28.3)	494	(27.8)	1,779	(100.0)
Connecticut	75	(2.8)	148	(5.4)	366	(13.4)	636	(23.4)	708	(26.0)	790	(29.0)	2,723	(100.0)
Delaware	44	(3.2)	85	(6.3)	209	(15.4)	288	(21.2)	346	(25.4)	388	(28.5)	1,360	(100.0)
Dist. of Columbia	72	(3.9)	106	(5.8)	224	(12.2)	379	(20.7)	463	(25.3)	585	(32.0)	1,829	(100.0)
Georgia	299	(4.9)	452	(7.4)	763	(12.5)	1,073	(17.6)	1,649	(27.0)	1,861	(30.5)	6,097	(100.0)
Hawaii	41	(4.1)	73	(7.3)	150	(15.0)	202	(20.2)	258	(25.7)	278	(27.7)	1,002	(100.0)
Idaho	8	(3.5)	13	(5.7)	20	(8.7)	36	(15.7)	84	(36.7)	68	(29.7)	229	(100.0)
Indiana	86	(3.4)	164	(6.4)	261	(10.2)	369	(14.4)	798	(31.1)	889	(34.6)	2,567	(100.0)
Iowa‡	48	(3.3)	107	(7.2)	187	(12.7)	257	(17.4)	407	(27.6)	470	(31.8)	1,476	(100.0)
Kansas	112	(4.2)	188	(7.0)	332	(12.4)	473	(17.6)	790	(29.5)	786	(29.3)	2,681	(100.0)
Kentucky	84	(6.1)	89	(6.5)	161	(11.7)	214	(15.5)	387	(28.1)	443	(32.1)	1,378	(100.0)
Louisiana	120	(5.1)	138	(5.9)	289	(12.3)	358	(15.2)	685	(29.1)	768	(32.6)	2,358	(100.0)
Maine	12	(2.0)	38	(6.5)	82	(14.0)	125	(21.3)	151	(25.8)	178	(30.4)	586	(100.0)
Maryland	102	(5.0)	157	(7.6)	252	(12.3)	395	(19.2)	547	(26.6)	602	(29.3)	2,055	(100.0)
Massachusetts	141	(2.8)	295	(6.0)	534	(10.8)	855	(17.3)	1,486	(30.0)	1,640	(33.1)	4,951	(100.0)
Michigan	185	(3.3)	371	(6.6)	676	(12.0)	925	(16.5)	1,651	(29.4)	1,809	(32.2)	5,617	(100.0)
Minnesota	70	(2.7)	141	(5.5)	326	(12.6)	459	(17.7)	736	(28.5)	854	(33.0)	2,586	(100.0)
Mississippi	37	(4.5)	54	(6.6)	85	(10.4)	105	(12.8)	249	(30.4)	290	(35.4)	820	(100.0)
Missouri	62	(3.6)	142	(8.2)	194	(11.3)	280	(16.3)	507	(29.4)	537	(31.2)	1,722	(100.0)
Montana	16	(2.6)	47	(7.7)	100	(16.3)	119	(19.4)	154	(25.1)	177	(28.9)	613	(100.0)
Nebraska	36	(3.1)	75	(6.5)	151	(13.0)	217	(18.7)	319	(27.5)	364	(31.3)	1,162	(100.0)
Nevada	38	(3.1)	81	(6.6)	159	(13.0)	253	(20.7)	342	(28.0)	350	(28.6)	1,223	(100.0)
New Jersey	221	(3.2)	415	(6.0)	879	(12.6)	1,410	(20.2)	1,860	(26.7)	2,189	(31.4)	6,974	(100.0)
New Mexico	43	(3.6)	81	(6.7)	167	(13.8)	257	(21.3)	317	(26.3)	341	(28.3)	1,206	(100.0)
New York	935	(3.7)	1,730	(6.8)	3,318	(13.0)	5,013	(19.7)	6,750	(26.5)	7,741	(30.4)	25,487	(100.0)
City	700	(4.0)	1,219	(6.9)	2,343	(13.3)	3,445	(19.5)	4,578	(26.0)	5,337	(30.3)	17,622	(100.0)
State	235	(3.0)	511	(6.5)	975	(12.4)	1,568	(19.9)	2,172	(27.6)	2,404	(30.6)	7,865	(100.0)
North Carolina	264	(4.0)	430	(6.6)	792	(12.1)	1,011	(15.4)	1,918	(29.3)	2,134	(32.6)	6,549	(100.0)
North Dakota	3	(1.0)	17	(5.9)	41	(14.2)	63	(21.8)	79	(27.3)	86	(29.8)	289	(100.0)
Ohio	334	(4.3)	575	(7.4)	867	(11.2)	1,266	(16.4)	2,243	(29.0)	2,444	(31.6)	7,729	(100.0)
Oregon	104	(3.3)	219	(6.9)	429	(13.6)	623	(19.8)	865	(27.4)	912	(28.9)	3,152	(100.0)
Pennsylvania	313	(4.6)	496	(7.2)	756	(11.0)	967	(14.1)	2,084	(30.4)	2,235	(32.6)	6,851	(100.0)
Rhode Island	21	(2.4)	49	(5.5)	79	(8.9)	135	(15.2)	282	(31.7)	323	(36.3)	889	(100.0)
South Carolina	70	(3.9)	132	(7.3)	179	(9.9)	406	(22.5)	464	(25.7)	551	(30.6)	1,802	(100.0)
South Dakota	7	(4.0)	10	(5.7)	24	(13.7)	33	(18.9)	51	(29.1)	50	(28.6)	175	(100.0)
Tennessee	146	(3.8)	300	(7.8)	435	(11.3)	611	(15.9)	1,133	(29.4)	1,226	(31.8)	3,851	(100.0)
Texas	336	(2.5)	688	(5.0)	1,429	(10.4)	2,521	(18.4)	3,885	(28.4)	4,830	(35.3)	13,689	(100.0)
Utah	25	(3.6)	48	(7.0)	76	(11.0)	103	(15.0)	214	(31.1)	222	(32.3)	688	(100.0)
Vermont	13	(3.0)	18	(4.2)	62	(14.5)	90	(21.1)	119	(27.9)	125	(29.3)	427	(100.0)
Virginia	183	(3.8)	306	(6.4)	547	(11.5)	774	(16.2)	1,403	(29.4)	1,562	(32.7)	4,775	(100.0)
Washington	137	(2.6)	350	(6.6)	689	(13.0)	1,129	(21.3)	1,453	(27.4)	1,554	(29.3)	5,312	(100.0)
West Virginia	14	(2.4)	45	(7.6)	66	(11.1)	98	(16.5)	164	(27.6)	207	(34.8)	594	(100.0)
Wisconsin§	68	(3.0)	154	(6.8)	283	(12.5)	355	(15.7)	675	(29.9)	724	(32.0)	2,259	(100.0)
Wyoming	1	(2.3)	9	(20.5)	3	(6.8)	9	(20.5)	12	(27.3)	10	(22.7)	44	(100.0)
<b>Total</b>	<b>5,268</b>	<b>(3.6)</b>	<b>9,628</b>	<b>(6.6)</b>	<b>17,737</b>	<b>(12.1)</b>	<b>26,433</b>	<b>(18.1)</b>	<b>41,189</b>	<b>(28.1)</b>	<b>46,122</b>	<b>(31.5)</b>	<b>146,377</b>	<b>(100.0)</b>
Abortion ratio¶	741		525		435		379		396		351		394	
Abortion rate**	2		7		12		18		29		32		15	

\* Data from 44 states, the District of Columbia, and New York City.

† Percentages might not add to 100.0 because of rounding.

§ Includes residents only.

¶ Calculated as the number of legal abortions obtained by women of a given age per 1,000 live births to women of the same age for these states. For each state, data for women whose age was unknown were distributed according to the known age distribution for that state.

\*\* Calculated as the number of legal abortions obtained by women of a given age per 1,000 women of the same age for these states; women aged 13–14 years were used for the denominator for the &lt;15 years age group. For each state, data for women whose age was unknown were distributed according to the known age distribution for that state.

**TABLE 6. Reported legal abortions, by weeks of gestation\* and state of occurrence—selected states,† United States, 1998**

State	Weeks of gestation												Total			
	≤8		9–10		11–12		13–15		16–20		≥21				Unknown	
	No.	(%)	No.	(%)	No.	(%)	No.	(%)	No.	(%)	No.	(%)	No.	(%)	No.	(%) <sup>§</sup>
Alabama	7,365	(55.0)	3,088	(23.1)	1,447	(10.8)	986	(7.4)	383	(2.9)	55	(0.4)	62	(0.5)	<b>13,386</b>	<b>(100.0)</b>
Arizona <sup>¶</sup>	7,171	(48.6)	3,685	(25.0)	1,438	(9.8)	1,318	(8.9)	589	(4.0)	2	(0.0)	544	(3.7)	<b>14,747</b>	<b>(100.0)</b>
Arkansas	2,995	(53.2)	1,161	(20.6)	534	(9.5)	318	(5.6)	142	(2.5)	7	(0.1)	477	(8.5)	<b>5,634</b>	<b>(100.0)</b>
Colorado	3,848	(51.4)	1,658	(22.1)	929	(12.4)	598	(8.0)	253	(3.4)	138	(1.8)	69	(0.9)	<b>7,493</b>	<b>(100.0)</b>
Connecticut <sup>¶</sup>	7,435**	(57.5)	2,871**	(22.2)	1,448**	(11.2)	821	(6.3)	281	(2.2)	7	(0.1)	76	(0.6)	<b>12,939</b>	<b>(100.0)</b>
Delaware <sup>¶</sup>	2,801	(51.3)	1,349	(24.7)	694	(12.7)	361	(6.6)	225	(4.1)	16	(0.3)	9	(0.2)	<b>5,455</b>	<b>(100.0)</b>
Dist. of Columbia	3,496**	(41.9)	2,040**	(24.5)	1,363**	(16.4)	704	(8.4)	366	(4.4)	0	(0.0)	367	(4.4)	<b>8,336</b>	<b>(100.0)</b>
Georgia <sup>¶</sup>	15,874	(49.1)	6,976	(21.6)	4,136	(12.8)	2,155	(6.7)	2,013	(6.2)	1,027	(3.2)	168	(0.5)	<b>32,349</b>	<b>(100.0)</b>
Hawaii <sup>¶</sup>	2,107	(50.6)	1,084	(26.0)	517	(12.4)	182	(4.4)	198	(4.8)	25	(0.6)	49	(1.2)	<b>4,162</b>	<b>(100.0)</b>
Idaho	446	(50.2)	297	(33.4)	104	(11.7)	25	(2.8)	10	(1.1)	5	(0.6)	1	(0.1)	<b>888</b>	<b>(100.0)</b>
Indiana <sup>¶</sup>	7,763	(62.4)	2,898	(23.3)	1,249	(10.0)	216	(1.7)	139	(1.1)	0	(0.0)	178	(1.4)	<b>12,443</b>	<b>(100.0)</b>
Iowa <sup>††</sup>	4,204	(67.7)	920	(14.8)	534	(8.6)	294	(4.7)	211	(3.4)	9	(0.1)	42	(0.7)	<b>6,214</b>	<b>(100.0)</b>
Kansas <sup>¶</sup>	6,722	(58.5)	1,737	(15.1)	1,064	(9.3)	689	(6.0)	623	(5.4)	660	(5.7)	0	(0.0)	<b>11,495</b>	<b>(100.0)</b>
Kentucky	3,082	(46.0)	1,399	(20.9)	832	(12.4)	534	(8.0)	473	(7.1)	336	(5.0)	50	(0.7)	<b>6,706</b>	<b>(100.0)</b>
Louisiana <sup>¶</sup>	5,332	(47.0)	2,607	(23.0)	1,347	(11.9)	997	(8.8)	636	(5.6)	329	(2.9)	103	(0.9)	<b>11,351</b>	<b>(100.0)</b>
Maine <sup>§§</sup>	1,306	(54.2)	725	(30.1)	332	(13.8)	10	(0.4)	5	(0.2)	3	(0.1)	27	(1.1)	<b>2,408</b>	<b>(100.0)</b>
Maryland <sup>¶</sup>	6,973	(66.7)	1,953	(18.7)	936	(9.0)	418	(4.0)	166	(1.6)	12	(0.1)	0	(0.0)	<b>10,458</b>	<b>(100.0)</b>
Michigan	17,526	(62.4)	5,139	(18.3)	2,339	(8.3)	1,766	(6.3)	962	(3.4)	207	(0.7)	168	(0.6)	<b>28,107</b>	<b>(100.0)</b>
Minnesota <sup>¶</sup>	8,280	(57.4)	2,691	(18.7)	1,587	(11.0)	771	(5.3)	644	(4.5)	111	(0.8)	339	(2.4)	<b>14,423</b>	<b>(100.0)</b>
Mississippi	1,922	(48.6)	986	(24.9)	575	(14.5)	326	(8.2)	56	(1.4)	23	(0.6)	67	(1.7)	<b>3,955</b>	<b>(100.0)</b>
Missouri	4,908	(54.0)	2,230	(24.5)	1,131	(12.4)	495	(5.4)	223	(2.5)	29	(0.3)	73	(0.8)	<b>9,089</b>	<b>(100.0)</b>
Montana <sup>¶</sup>	1,424	(55.3)	439	(17.1)	323	(12.6)	184	(7.2)	142	(5.5)	52	(2.0)	9	(0.3)	<b>2,573</b>	<b>(100.0)</b>
Nevada	3,538	(54.1)	1,434	(21.9)	819	(12.5)	371	(5.7)	251	(3.8)	66	(1.0)	60	(0.9)	<b>6,539</b>	<b>(100.0)</b>
New Jersey	19,284	(54.0)	6,846	(19.2)	2,634	(7.4)	3,115	(8.7)	2,985	(8.4)	685	(1.9)	137	(0.4)	<b>35,686</b>	<b>(100.0)</b>
New Mexico <sup>¶¶</sup>	2,763	(51.2)	1,176	(21.8)	699	(13.0)	439	(8.1)	244	(4.5)	22	(0.4)	52	(1.0)	<b>5,395</b>	<b>(100.0)</b>
New York	79,156	(56.7)	26,053	(18.7)	12,631	(9.0)	7,524	(5.4)	6,111	(4.4)	2,501	(1.8)	5,670	(4.1)	<b>139,646</b>	<b>(100.0)</b>
City	62,156	(59.8)	18,231	(17.5)	8,946	(8.6)	5,915	(5.7)	5,384	(5.2)	2,308	(2.2)	1,042	(1.0)	<b>103,982</b>	<b>(100.0)</b>
State	17,000	(47.7)	7,822	(21.9)	3,685	(10.3)	1,609	(4.5)	727	(2.0)	193	(0.5)	4,628	(13.0)	<b>35,664</b>	<b>(100.0)</b>
North Carolina	17,592	(53.1)	6,931	(20.9)	3,614	(10.9)	2,268	(6.9)	810	(2.4)	81	(0.2)	1,809	(5.5)	<b>33,105</b>	<b>(100.0)</b>
North Dakota <sup>¶</sup>	687	(55.3)	276	(22.2)	133	(10.7)	129	(10.4)	5	(0.4)	0	(0.0)	12	(1.0)	<b>1,242</b>	<b>(100.0)</b>
Ohio <sup>¶</sup>	19,708	(52.6)	7,861	(21.0)	4,322	(11.5)	2,872	(7.7)	2,020	(5.4)	683	(1.8)	13	(0.0)	<b>37,479</b>	<b>(100.0)</b>
Oregon <sup>¶</sup>	6,799	(47.4)	3,359	(23.4)	1,746	(12.2)	991	(6.9)	761	(5.3)	239	(1.7)	449	(3.1)	<b>14,344</b>	<b>(100.0)</b>
Pennsylvania	18,480	(51.9)	8,427	(23.7)	4,161	(11.7)	2,586	(7.3)	1,544	(4.3)	418	(1.2)	1	(0.0)	<b>35,617</b>	<b>(100.0)</b>
Rhode Island	2,759	(60.0)	982	(21.3)	444	(9.7)	260	(5.7)	143	(3.1)	6	(0.1)	7	(0.2)	<b>4,601</b>	<b>(100.0)</b>
South Carolina	5,122	(58.2)	2,413	(27.4)	1,197	(13.6)	32	(0.4)	13	(0.1)	15	(0.2)	9	(0.1)	<b>8,801</b>	<b>(100.0)</b>
South Dakota	280	(41.5)	261	(38.7)	110	(16.3)	19	(2.8)	2	(0.3)	1	(0.1)	1	(0.1)	<b>674</b>	<b>(100.0)</b>
Tennessee <sup>¶</sup>	7,243	(38.4)	5,823	(30.9)	3,155	(16.7)	1,325	(7.0)	273	(1.4)	119	(0.6)	911	(4.8)	<b>18,849</b>	<b>(100.0)</b>
Texas <sup>¶</sup>	46,420	(56.8)	16,237	(19.9)	8,247	(10.1)	5,398	(6.6)	3,056	(3.7)	1,079	(1.3)	1,249	(1.5)	<b>81,868</b>	<b>(100.0)</b>
Utah	2,142	(61.4)	797	(22.9)	240	(6.9)	160	(4.6)	116	(3.3)	0	(0.0)	32	(0.9)	<b>3,487</b>	<b>(100.0)</b>
Vermont	1,198	(64.1)	422	(22.6)	164	(8.8)	83	(4.4)	2	(0.1)	1	(0.1)	0	(0.0)	<b>1,870</b>	<b>(100.0)</b>
Virginia <sup>¶</sup>	16,648	(63.7)	5,495	(21.0)	2,668	(10.2)	619	(2.4)	296	(1.1)	96	(0.4)	293	(1.1)	<b>26,115</b>	<b>(100.0)</b>
Washington <sup>¶</sup>	13,119	(51.8)	5,717	(22.6)	2,722	(10.7)	1,916	(7.6)	1,237	(4.9)	587	(2.3)	29	(0.1)	<b>25,327</b>	<b>(100.0)</b>
West Virginia <sup>***</sup>	1,145	(41.8)	771	(28.2)	473	(17.3)	242	(8.8)	102	(3.7)	2	(0.1)	3	(0.1)	<b>2,738</b>	<b>(100.0)</b>
Wisconsin <sup>††¶¶</sup>	5,842	(51.6)	2,489	(22.0)	1,490	(13.2)	801	(7.1)	559	(4.9)	141	(1.2)	0	(0.0)	<b>11,322</b>	<b>(100.0)</b>
Wyoming <sup>***</sup>	86	(45.7)	82	(43.6)	18	(9.6)	2	(1.1)	0	(0.0)	0	(0.0)	0	(0.0)	<b>188</b>	<b>(100.0)</b>
<b>TOTAL</b>	<b>392,991</b>	<b>(54.6)</b>	<b>151,785</b>	<b>(21.1)</b>	<b>76,546</b>	<b>(10.6)</b>	<b>45,320</b>	<b>(6.3)</b>	<b>29,270</b>	<b>(4.1)</b>	<b>9,795</b>	<b>(1.4)</b>	<b>13,615</b>	<b>(1.9)</b>	<b>719,322</b>	<b>(100.0)</b>

\* Data for legal abortions obtained at ≤8 weeks of gestation are presented in Table 7 by ≤6, 7, and 8 weeks of gestation.

† Data from 42 states, the District of Columbia, and New York City; excludes one state where weeks of gestation was reported as unknown for &gt;15% of women.

§ Percentages might not add to 100.0 because of rounding.

¶ Weeks of gestation based on physicians' estimates.

\*\* Numbers obtained at ≤12 weeks of gestation redistributed.

†† Includes residents only.

§§ Weeks of gestation based on date of last menstrual period only if physicians' estimates were unknown.

¶¶ Weeks of gestation based on physicians' estimates only if date of last menstrual period was unknown or unreliable.

\*\*\* Weeks of gestation based on physicians' estimates only if date of last menstrual period was unknown.



**TABLE 7. Reported legal abortions obtained at  $\leq 8$  weeks of gestation, by known weeks of gestation and state of occurrence — selected states,\* United States, 1998**

State	Weeks of gestation						Total obtained at $\leq 8$ weeks of gestation	
	$\leq 6$		7		8		No.	(%) <sup>†</sup>
	No.	(%)	No.	(%)	No.	(%)		
Alabama	1,787	(13.3)	2,527	(18.9)	3,051	(22.8)	7,365	(55.0)
Arizona <sup>§</sup>	1,294	( 8.8)	2,744	(18.6)	3,133	(21.2)	7,171	(48.6)
Arkansas	1,167	(20.7)	987	(17.5)	841	(14.9)	2,995	(53.2)
Colorado	1,370	(18.3)	1,106	(14.8)	1,372	(18.3)	3,848	(51.4)
Delaware <sup>§</sup>	954	(17.5)	806	(14.8)	1,041	(19.1)	2,801	(51.3)
Dist. of Columbia <sup>¶</sup>	388	( 4.7)	525	( 6.3)	2,583	(31.0)	3,496	(41.9)
Georgia <sup>§</sup>	3,600	(11.1)	6,462	(20.0)	5,812	(18.0)	15,874	(49.1)
Hawaii <sup>§</sup>	297	( 7.1)	699	(16.8)	1,111	(26.7)	2,107	(50.6)
Idaho	130	(14.6)	112	(12.6)	204	(23.0)	446	(50.2)
Indiana	3,415	(27.4)	2,216	(17.8)	2,132	(17.1)	7,763	(62.4)
Iowa <sup>**</sup>	2,250	(36.2)	1,009	(16.2)	945	(15.2)	4,204	(67.7)
Kansas <sup>§</sup>	3,158	(27.5)	2,164	(18.8)	1,400	(12.2)	6,722	(58.5)
Kentucky	779	(11.6)	1,220	(18.2)	1,083	(16.1)	3,082	(46.0)
Louisiana <sup>§</sup>	1,755	(15.5)	1,606	(14.1)	1,971	(17.4)	5,332	(47.0)
Maine <sup>††</sup>	275	(11.4)	431	(17.9)	600	(24.9)	1,306	(54.2)
Maryland <sup>§</sup>	3,912	(37.4)	1,496	(14.3)	1,565	(15.0)	6,973	(66.7)
Michigan	7,494	(26.7)	4,900	(17.4)	5,132	(18.3)	17,526	(62.4)
Minnesota <sup>§</sup>	2,291	(15.9)	3,349	(23.2)	2,640	(18.3)	8,280	(57.4)
Mississippi	681	(17.2)	631	(16.0)	610	(15.4)	1,922	(48.6)
Missouri <sup>§§</sup>	1,736	(19.1)	1,678	(18.5)	1,494	(16.4)	4,908	(54.0)
Montana <sup>§</sup>	630	(24.5)	403	(15.7)	391	(15.2)	1,424	(55.3)
Nevada	685	(10.5)	1,410	(21.6)	1,443	(22.1)	3,538	(54.1)
New Jersey	7,343	(20.6)	4,839	(13.6)	7,102	(19.9)	19,284	(54.0)
New Mexico <sup>§§</sup>	934	(17.3)	977	(18.1)	852	(15.8)	2,763	(51.2)
New York	30,372	(21.7)	25,427	(18.2)	23,357	(16.7)	79,156	(56.7)
City	25,326	(24.4)	19,197	(18.5)	17,633	(17.0)	62,156	(59.8)
State	5,046	(14.1)	6,230	(17.5)	5,724	(16.0)	17,000	(47.7)
North Carolina	6,545	(19.8)	5,741	(17.3)	5,306	(16.0)	17,592	(53.1)
North Dakota <sup>§</sup>	202	(16.3)	267	(21.5)	218	(17.6)	687	(55.3)
Ohio <sup>§</sup>	6,575	(17.5)	6,137	(16.4)	6,996	(18.7)	19,708	(52.6)
Oregon <sup>§</sup>	1,403	( 9.8)	2,676	(18.7)	2,720	(19.0)	6,799	(47.4)
Pennsylvania	5,820	(16.3)	6,029	(16.9)	6,631	(18.6)	18,480	(51.9)
Rhode Island	935	(20.3)	1,029	(22.4)	795	(17.3)	2,759	(60.0)
South Carolina	1,579	(17.9)	1,423	(16.2)	2,120	(24.1)	5,122	(58.2)
South Dakota	34	( 5.0)	94	(13.9)	152	(22.6)	280	(41.5)
Tennessee <sup>§</sup>	924	( 4.9)	2,536	(13.5)	3,783	(20.1)	7,243	(38.4)
Texas <sup>§</sup>	16,926	(20.7)	13,919	(17.0)	15,575	(19.1)	46,420	(56.8)
Utah	1,041	(29.9)	614	(17.6)	487	(14.0)	2,142	(61.4)
Vermont	412	(22.0)	426	(22.8)	360	(19.3)	1,198	(64.1)
Virginia <sup>§</sup>	5,616	(21.5)	5,449	(20.9)	5,583	(21.4)	16,648	(63.7)
Washington <sup>§</sup>	3,690	(14.6)	4,643	(18.3)	4,786	(18.9)	13,119	(51.8)
West Virginia <sup>¶¶</sup>	263	( 9.6)	397	(14.5)	485	(17.7)	1,145	(41.8)
Wyoming <sup>¶¶</sup>	25	(13.3)	16	( 8.5)	45	(23.9)	86	(45.7)
<b>TOTAL</b>	<b>130,687</b>	<b>(18.8)</b>	<b>121,120</b>	<b>(17.4)</b>	<b>127,907</b>	<b>(18.4)</b>	<b>379,714</b>	<b>(54.6)</b>

\* Data from 40 states, the District of Columbia, and New York City; excludes one state, where weeks of gestation was reported as unknown for >15% of women, and two states that were included in Table 6 but did not provide component weeks of gestation for abortions obtained at  $\leq 8$  weeks.

† Percentages might not add to total percentage obtained at  $\leq 8$  weeks because of rounding.

§ Weeks of gestation based on physicians' estimates.

¶ Numbers obtained at  $\leq 12$  weeks of gestation redistributed.

\*\* Includes residents only.

†† Weeks of gestation based on date of last menstrual period only if physicians' estimates were unknown.

§§ Weeks of gestation based on physicians' estimates only if date of last menstrual period was unknown or unreliable.

¶¶ Weeks of gestation based on physicians' estimates only if date of last menstrual period was unknown.

TABLE 8. Reported legal abortions, by type of procedure and state of occurrence—selected states,\* United States, 1998

State	Procedure															
	Suction curettage & dilation and evacuation		Sharp curettage		All curettage		Intrauterine instillation		Medical		Other†		Unknown		Total	
	No.	(%)	No.	(%)	No.	(%)§	No.	(%)	No.	(%)	No.	(%)	No.	(%)	No.	(%)§
Alabama	13,272	(99.1)	12	(0.1)	13,284	(99.2)	15	(0.1)	0	(0.0)	40	(0.3)	47	(0.4)	13,386	(100.0)
Arizona	14,557	(98.7)	0	(0.0)	14,557	(98.7)	0	(0.0)	0	(0.0)	0	(0.0)	190	(1.3)	14,747	(100.0)
Arkansas	5,627	(99.9)	5	(0.1)	5,632	(100.0)	0	(0.0)	0	(0.0)	2	(0.0)	0	(0.0)	5,634	(100.0)
Colorado	7,045	(94.0)	6	(0.1)	7,051	(94.1)	14	(0.2)	0	(0.0)	259	(3.5)	169	(2.3)	7,493	(100.0)
Connecticut	12,865	(99.4)	72	(0.6)	12,937	(100.0)	0	(0.0)	0	(0.0)	2	(0.0)	0	(0.0)	12,939	(100.0)
Delaware	5,409	(99.2)	14	(0.3)	5,423	(99.4)	15	(0.3)	14	(0.3)	0	(0.0)	3	(0.1)	5,455	(100.0)
Dist. of Columbia	5,474	(65.7)	2,420	(29.0)	7,894	(94.7)	4	(0.0)	0	(0.0)	57	(0.7)	381	(4.6)	8,336	(100.0)
Georgia	32,176	(99.5)	15	(0.0)	32,191	(99.5)	28	(0.1)	0	(0.0)	130	(0.4)	0	(0.0)	32,349	(100.0)
Hawaii	4,081	(98.1)	42	(1.0)	4,123	(99.1)	3	(0.1)	0	(0.0)	15	(0.4)	21	(0.5)	4,162	(100.0)
Idaho	873	(98.3)	4	(0.5)	877	(98.8)	2	(0.2)	6	(0.7)	3	(0.3)	0	(0.0)	888	(100.0)
Indiana	12,134	(97.5)	64	(0.5)	12,198	(98.0)	0	(0.0)	0	(0.0)	113	(0.9)	132	(1.1)	12,443	(100.0)
Kansas	10,841	(94.3)	9	(0.1)	10,850	(94.4)	3	(0.0)	125	(1.1)	517	(4.5)	0	(0.0)	11,495	(100.0)
Kentucky	6,506	(97.0)	84	(1.3)	6,590	(98.3)	7	(0.1)	0	(0.0)	1	(0.0)	108	(1.6)	6,706	(100.0)
Louisiana	10,693	(94.2)	8	(0.1)	10,701	(94.3)	0	(0.0)	0	(0.0)	20	(0.2)	630	(5.6)	11,351	(100.0)
Maine	2,396	(99.5)	2	(0.1)	2,398	(99.6)	1	(0.0)	1	(0.0)	0	(0.0)	8	(0.3)	2,408	(100.0)
Maryland	10,187	(97.4)	87	(0.8)	10,274	(98.2)	14	(0.1)	0	(0.0)	170	(1.6)	0	(0.0)	10,458	(100.0)
Massachusetts	24,931	(90.0)	75	(0.3)	25,006	(90.2)	813	(2.9)	†	(—)	1,895**	(6.8)	0	(0.0)	27,714	(100.0)
Michigan	25,999	(92.5)	1,190	(4.2)	27,189	(96.7)	39	(0.1)	629	(2.2)	17	(0.1)	233	(0.8)	28,107	(100.0)
Minnesota	13,646	(94.6)	8	(0.1)	13,654	(94.7)	0	(0.0)	†	(—)	93**	(0.6)	676	(4.7)	14,423	(100.0)
Mississippi	3,909	(98.8)	0	(0.0)	3,909	(98.8)	32	(0.8)	13	(0.3)	0	(0.0)	1	(0.0)	3,955	(100.0)
Missouri	8,451	(93.0)	606	(6.7)	9,057	(99.6)	3	(0.0)	8	(0.1)	11	(0.1)	10	(0.1)	9,089	(100.0)
Montana	2,559	(99.5)	5	(0.2)	2,564	(99.7)	1	(0.0)	8	(0.3)	0	(0.0)	0	(0.0)	2,573	(100.0)
Nebraska	5,079	(98.8)	0	(0.0)	5,079	(98.8)	0	(0.0)	49	(1.0)	8	(0.2)	4	(0.1)	5,140	(100.0)
Nevada	6,522	(99.7)	1	(0.1)	6,523	(99.8)	1	(0.0)	0	(0.0)	0	(0.0)	15	(0.2)	6,539	(100.0)
New Jersey††	29,234	(98.0)	372	(1.2)	29,606	(99.3)	63	(0.2)	42	(0.1)	1	(0.0)	112	(0.4)	29,824	(100.0)
New Mexico	5,110	(94.7)	136	(2.5)	5,246	(97.2)	0	(0.0)	149	(2.8)	0	(0.0)	0	(0.0)	5,395	(100.0)
New York	131,508	(94.2)	4,035	(2.9)	135,543	(97.1)	821	(0.6)	1,147	(0.8)	175	(0.1)	1,960	(1.4)	139,646	(100.0)
City	97,642	(93.9)	3,845	(3.7)	101,487	(97.6)	643	(0.6)	603	(0.6)	101	(0.1)	1,148	(1.1)	103,982	(100.0)
State	33,866	(95.0)	190	(0.5)	34,056	(95.5)	178	(0.5)	544	(1.5)	74	(0.2)	812	(2.3)	35,664	(100.0)
North Carolina	32,807	(99.1)	27	(0.1)	32,834	(99.2)	129	(0.4)	75	(0.2)	67	(0.2)	0	(0.0)	33,105	(100.0)
North Dakota	1,238	(99.7)	1	(0.1)	1,239	(99.8)	0	(0.0)	0	(0.0)	0	(0.0)	3	(0.2)	1,242	(100.0)
Ohio	37,645	(96.3)	999	(2.6)	38,644	(98.8)	62	(0.2)	247	(0.6)	152	(0.4)	0	(0.0)	39,105§§	(100.0)
Oregon	14,022	(97.8)	19	(0.1)	14,041	(97.9)	39	(0.3)	78	(0.5)	183	(1.3)	3	(0.0)	14,344	(100.0)
Pennsylvania	34,623	(97.2)	4	(0.0)	34,627	(97.2)	14	(0.0)	746	(2.1)	230	(0.6)	0	(0.0)	35,617	(100.0)
Rhode Island	4,570	(99.3)	16	(0.3)	4,586	(99.7)	8	(0.2)	3	(0.1)	2	(0.0)	2	(0.0)	4,601	(100.0)
South Carolina	8,769	(99.6)	2	(0.1)	8,771	(99.7)	10	(0.1)	0	(0.0)	16	(0.2)	4	(0.0)	8,801	(100.0)
South Dakota	673	(99.9)	0	(0.0)	673	(99.9)	0	(0.0)	1	(0.1)	0	(0.0)	0	(0.0)	674	(100.0)
Tennessee	18,563	(98.5)	4	(0.0)	18,567	(98.5)	70	(0.4)	0	(0.0)	11	(0.0)	201	(1.1)	18,849	(100.0)
Texas	79,324	(97.1)	250	(0.3)	79,574	(97.4)	68	(0.1)	1,083	(1.3)	43	(0.1)	918	(1.1)	81,686	(100.0)
Utah	3,448	(98.9)	14	(0.4)	3,462	(99.3)	1	(0.0)	0	(0.0)	0	(0.0)	24	(0.7)	3,487	(100.0)
Vermont	1,795	(96.0)	0	(0.0)	1,795	(96.0)	0	(0.0)	75	(4.0)	0	(0.0)	0	(0.0)	1,870	(100.0)
Virginia	25,188	(96.5)	14	(0.1)	25,202	(96.5)	109	(0.4)	0	(0.0)	728	(2.8)	76	(0.3)	26,115	(100.0)
Washington	24,866	(98.2)	33	(0.1)	24,899	(98.3)	25	(0.1)	400	(1.6)	3	(0.0)	0	(0.0)	25,327	(100.0)
Wyoming	124	(66.0)	55	(29.3)	179	(95.2)	0	(0.0)	0	(0.0)	0	(0.0)	9	(4.8)	188	(100.0)
<b>Total</b>	<b>698,739</b>	<b>(96.0)</b>	<b>10,710</b>	<b>(1.5)</b>	<b>709,449</b>	<b>(97.5)</b>	<b>2,414</b>	<b>(0.3)</b>	<b>4,899</b>	<b>(0.7)</b>	<b>4,964</b>	<b>(0.7)</b>	<b>5,940</b>	<b>(0.8)</b>	<b>727,666</b>	<b>(100.0)</b>

\* Data from 41 states, the District of Columbia, and New York City.

† Includes hysterotomy/hysterectomy and procedures reported as "other."

§ Percentages might not add to total because of rounding.

¶ Medical procedures included with "other."

\*\* Includes medical (nonsurgical) procedures; no separate numbers provided.

†† Numbers do not include private physicians' procedures.

§§ Does not add to total abortions reported because of some reported combination procedures.

— Not available.

**TABLE 9. Reported legal abortions, by race of women who obtained an abortion and state of occurrence — selected states,\* United States, 1998**

State	Race									
	White		Black		Other		Unknown		Total	
	No.	(%)	No.	(%)	No.	(%)	No.	(%)	No.	(%)†
Alabama	6,679	(49.9)	6,396	(47.8)	220	( 1.6)	91	( 0.7)	13,386	(100.0)
Arizona	11,708	(79.4)	714	( 4.8)	1,106	( 7.5)	1,219	( 8.3)	14,747	(100.0)
Arkansas	3,479	(61.8)	1,981	(35.2)	112	( 2.0)	62	( 1.1)	5,634	(100.0)
Colorado	5,883	(78.5)	366	( 4.9)	347	( 4.6)	897	(12.0)	7,493	(100.0)
Delaware	3,295	(60.4)	1,988	(36.4)	172	( 3.2)	0	( 0.0)	5,455	(100.0)
Dist. of Columbia	760	(9.1)	6,363	(76.3)	1,046	(12.5)	167	( 2.0)	8,336	(100.0)
Georgia	14,156	(43.8)	17,210	(53.2)	983	( 3.0)	0	( 0.0)	32,349	(100.0)
Hawaii	1,153	(27.7)	124	( 3.0)	2,506	(60.2)	379	( 9.1)	4,162	(100.0)
Idaho	834	(93.9)	7	( 0.8)	44	( 5.0)	3	( 0.3)	888	(100.0)
Indiana	7,595	(61.0)	3,093	(24.9)	235	( 1.9)	1,520	(12.2)	12,443	(100.0)
Iowa <sup>§</sup>	5,143	(82.8)	427	( 6.9)	492	( 7.9)	152	( 2.4)	6,214	(100.0)
Kansas	8,604	(74.8)	2,240	(19.5)	582	( 5.1)	69	( 0.6)	11,495	(100.0)
Kentucky	4,930	(73.5)	1,455	(21.7)	252	( 3.8)	69	( 1.0)	6,706	(100.0)
Louisiana	5,055	(44.5)	5,718	(50.4)	169	( 1.5)	409	( 3.6)	11,351	(100.0)
Maine	2,163	(89.8)	31	( 1.3)	56	( 2.3)	158	( 6.6)	2,408	(100.0)
Maryland	3,522	(33.7)	5,963	(57.0)	773	( 7.4)	200	( 1.9)	10,458	(100.0)
Minnesota	10,384	(72.0)	2,074	(14.4)	1,637	(11.3)	328	( 2.3)	14,423	(100.0)
Mississippi	1,215	(30.7)	2,702	(68.3)	35	( 0.9)	3	( 0.1)	3,955	(100.0)
Missouri	5,540	(61.0)	3,162	(34.8)	341	( 3.8)	46	( 0.5)	9,089	(100.0)
Montana	2,156	(83.8)	14	( 0.5)	214	( 8.3)	189	( 7.3)	2,573	(100.0)
New Jersey	12,507	(35.0)	15,975	(44.8)	5,717	(16.0)	1,487	( 4.2)	35,686	(100.0)
New Mexico	4,616	(85.6)	161	( 3.0)	1	( — )	618 <sup>¶</sup>	(11.5)	5,395	(100.0)
New York	65,594	(47.0)	56,887	(40.7)	6,600	( 4.7)	10,565	( 7.6)	139,646	(100.0)
City	43,168	(41.5)	49,642	(47.7)	5,938	( 5.7)	5,234	( 5.0)	103,982	(100.0)
State	22,426	(62.9)	7,245	(20.3)	662	( 1.9)	5,331	(14.9)	35,664	(100.0)
North Carolina	16,352	(49.4)	13,893	(42.0)	2,200	( 6.6)	660	( 2.0)	33,105	(100.0)
North Dakota	1,063	(85.6)	29	( 2.3)	147	(11.8)	3	( 0.2)	1,242	(100.0)
Ohio	22,366	(59.7)	12,155	(32.4)	729	( 1.9)	2,229	( 5.9)	37,479	(100.0)
Oregon	12,555	(87.5)	813	( 5.7)	496	( 3.5)	480	( 3.3)	14,344	(100.0)
Pennsylvania	19,697	(55.3)	14,689	(41.2)	1,192	( 3.3)	39	( 0.1)	35,617	(100.0)
Rhode Island	3,480	(75.6)	733	(15.9)	245	( 5.3)	143	( 3.1)	4,601	(100.0)
South Carolina	4,731	(53.8)	3,848	(43.7)	219	( 2.5)	3	( 0.0)	8,801	(100.0)
South Dakota	583	(86.5)	23	( 3.4)	64	( 9.5)	4	( 0.6)	674	(100.0)
Tennessee	10,397	(55.2)	7,870	(41.8)	471	( 2.5)	111	( 0.6)	18,849	(100.0)
Texas	55,495	(67.9)	15,853	(19.4)	3,558	( 4.4)	6,780	( 8.3)	81,686	(100.0)
Utah	2,904	(83.3)	70	( 2.0)	327	( 9.4)	186	( 5.3)	3,487	(100.0)
Vermont	1,804	(96.5)	26	( 1.4)	39	( 2.1)	1	( 0.1)	1,870	(100.0)
Virginia	13,649	(52.3)	10,267	(39.3)	1,699	( 6.5)	500	( 1.9)	26,115	(100.0)
West Virginia	2,385	(87.1)	297	(10.8)	48	( 1.8)	8	( 0.3)	2,738	(100.0)
Wisconsin <sup>§</sup>	7,887	(69.7)	2,727	(24.1)	708	( 6.3)	0	( 0.0)	11,322	(100.0)
<b>Total</b>	<b>362,319</b>	<b>(56.1)</b>	<b>218,344</b>	<b>(33.8)</b>	<b>35,781</b>	<b>( 5.5)</b>	<b>29,778</b>	<b>( 4.6)</b>	<b>646,222</b>	<b>(100.0)</b>
Ratio**	189		512		336				251	
Rate††	12		36		24				16	

\* Data from 37 states, the District of Columbia, and New York City; excludes five states where race was reported as unknown for >15% of women.

† Percentages might not add to 100.0 because of rounding.

§ Includes residents only.

¶ The number of women of some "other" races was included with "unknown" races.

\*\* Calculated as the number of legal abortions obtained by women of a given race per 1,000 live births to women of the same race for these states. For each state, data for women of unknown race were distributed according to the known racial distribution for that state.

†† Calculated as the number of legal abortions obtained by women of a given race per 1,000 women aged 15–44 years of the same race for these states. For each state, data for women of unknown race were distributed according to the known racial distribution for that state.

— Not available.

**TABLE 10. Reported legal abortions, by ethnicity of women who obtained abortions and state of occurrence — selected states,\* United States, 1998**

State	Ethnicity						Total	
	Hispanic		Non-Hispanic		Unknown		No.	(%) <sup>†</sup>
	No.	(%)	No.	(%)	No.	(%)		
Alabama	153	( 1.1)	12,789	(95.5)	444	( 3.3)	<b>13,386</b>	<b>(100.0)</b>
Arizona	4,113	(27.9)	9,415	(63.8)	1,219	( 8.3)	<b>14,747</b>	<b>(100.0)</b>
Arkansas	79	( 1.4)	5,487	(97.4)	68	( 1.2)	<b>5,634</b>	<b>(100.0)</b>
Delaware	259	( 4.7)	5,185	(95.1)	11	( 0.2)	<b>5,455</b>	<b>(100.0)</b>
Dist. of Columbia	740	( 8.9)	7,232	(86.8)	364	( 4.4)	<b>8,336</b>	<b>(100.0)</b>
Georgia	1,031	( 3.2)	29,829	(92.2)	1,489	( 4.6)	<b>32,349</b>	<b>(100.0)</b>
Hawaii	274	( 6.6)	3,358	(80.7)	530	(12.7)	<b>4,162</b>	<b>(100.0)</b>
Idaho	102	(11.5)	783	(88.2)	3	( 0.3)	<b>888</b>	<b>(100.0)</b>
Kansas	742	( 6.5)	10,377	(90.3)	376	( 3.3)	<b>11,495</b>	<b>(100.0)</b>
Maine	14	( 0.6)	2,153	(89.4)	241	(10.0)	<b>2,408</b>	<b>(100.0)</b>
Minnesota	486	( 3.4)	13,609	(94.4)	328	( 2.3)	<b>14,423</b>	<b>(100.0)</b>
Mississippi	13	( 0.3)	3,932	(99.4)	10	( 0.3)	<b>3,955</b>	<b>(100.0)</b>
Missouri	254	( 2.8)	7,884	(86.7)	951	(10.5)	<b>9,089</b>	<b>(100.0)</b>
New Jersey	5,949	(16.7)	26,599	(74.5)	3,138	( 8.8)	<b>35,686</b>	<b>(100.0)</b>
New York City	31,895	(30.7)	66,362	(63.8)	5,725	( 5.5)	<b>103,982</b>	<b>(100.0)</b>
Ohio	727	( 1.9)	35,672	(95.2)	1,080	( 2.9)	<b>37,479</b>	<b>(100.0)</b>
Oregon	1,113	( 7.8)	13,146	(91.6)	85	( 0.6)	<b>14,344</b>	<b>(100.0)</b>
Pennsylvania	1,393	( 3.9)	34,197	(96.0)	27	( 0.1)	<b>35,617</b>	<b>(100.0)</b>
South Carolina	158	( 1.8)	8,634	(98.1)	9	( 0.1)	<b>8,801</b>	<b>(100.0)</b>
South Dakota	14	( 2.1)	657	(97.5)	3	( 0.4)	<b>674</b>	<b>(100.0)</b>
Tennessee	294	( 1.6)	17,146	(91.0)	1,409	( 7.5)	<b>18,849</b>	<b>(100.0)</b>
Texas	25,256	(30.9)	49,650	(60.8)	6,780	( 8.3)	<b>81,686</b>	<b>(100.0)</b>
Utah	463	(13.3)	2,956	(84.8)	68	( 2.0)	<b>3,487</b>	<b>(100.0)</b>
Vermont	20	( 1.1)	1,850	(98.9)	0	( 0.0)	<b>1,870</b>	<b>(100.0)</b>
Wisconsin <sup>§</sup>	647	( 5.7)	10,675	(94.3)	0	( 0.0)	<b>11,322</b>	<b>(100.0)</b>
<b>Total</b>	<b>76,189</b>	<b>(15.9)</b>	<b>379,577</b>	<b>(79.1)</b>	<b>24,358</b>	<b>( 5.1)</b>	<b>480,124</b>	<b>(100.0)</b>
Abortion ratio <sup>¶</sup>	273		271				271	
Abortion rate <sup>**</sup>	20		15				15	

\* Data from 23 states, the District of Columbia, and New York City; excludes 15 states where ethnicity was reported as unknown for >15% of women.

† Percentages might not add to 100.0 because of rounding.

§ Includes residents only.

¶ Calculated as the number of legal abortions obtained by women of a given ethnicity per 1,000 live births to women of the same ethnicity for these states. For each state, data for women of unknown ethnicity were distributed according to the known ethnicity distribution for that state.

\*\* Calculated as the number of legal abortions obtained by women of a given ethnicity per 1,000 women of the same ethnicity for these states. For each state, data for women of unknown ethnicity were distributed according to the known ethnicity distribution for that state. Rates exclude New York City because population data were not available separately from New York State.

**TABLE 11. Reported legal abortions, by marital status of women who obtained an abortion and state of occurrence — selected states,\* United States, 1998**

State	Marital status						Total	
	Married <sup>†</sup>		Unmarried <sup>§</sup>		Unknown		No.	(%) <sup>¶</sup>
	No.	(%)	No.	(%)	No.	(%)		
Alabama	2,178	(16.3)	11,106	(83.0)	102	( 0.8)	13,386	(100.0)
Arkansas	955	(17.0)	4,597	(81.6)	82	( 1.5)	5,634	(100.0)
Colorado	1,380	(18.4)	6,067	(81.0)	46	( 0.6)	7,493	(100.0)
Delaware	898	(16.5)	4,557	(83.5)	0	( 0.0)	5,455	(100.0)
Georgia	6,314	(19.5)	26,035	(80.5)	0	( 0.0)	32,349	(100.0)
Hawaii	797	(19.1)	3,350	(80.5)	15	( 0.4)	4,162	(100.0)
Idaho	174	(19.6)	712	(80.2)	2	( 0.2)	888	(100.0)
Illinois**	7,565	(15.3)	40,297	(81.6)	1,541	( 3.1)	49,403	(100.0)
Indiana	1,793	(14.4)	9,093	(73.1)	1,557	(12.5)	12,443	(100.0)
Iowa <sup>††</sup>	1,202	(19.3)	4,858	(78.2)	154	( 2.5)	6,214	(100.0)
Kansas	2,207	(19.2)	9,265	(80.6)	23	( 0.2)	11,495	(100.0)
Kentucky	1,139	(17.0)	5,450	(81.3)	117	( 1.7)	6,706	(100.0)
Maryland	1,804	(17.2)	8,163	(78.1)	491	( 4.7)	10,458	(100.0)
Massachusetts	4,996	(18.0)	20,348	(73.4)	2,370	( 8.6)	27,714	(100.0)
Michigan	4,350	(15.5)	23,226	(82.6)	531	( 1.9)	28,107	(100.0)
Minnesota	2,484	(17.2)	11,460	(79.5)	479	( 3.3)	14,423	(100.0)
Mississippi	581	(14.7)	3,358	(84.9)	16	( 0.4)	3,955	(100.0)
Missouri	1,928	(21.2)	7,093	(78.0)	68	( 0.7)	9,089	(100.0)
Montana	447	(17.4)	1,833	(71.2)	293	(11.4)	2,573	(100.0)
Nevada	1,419	(21.7)	4,873	(74.5)	247	( 3.8)	6,539	(100.0)
New Jersey	6,290	(17.6)	29,116	(81.6)	280	( 0.8)	35,686	(100.0)
New Mexico	884	(16.4)	4,444	(82.4)	67	( 1.2)	5,395	(100.0)
New York City	20,061	(19.3)	81,404	(78.3)	2,517	( 2.4)	103,982	(100.0)
North Carolina	6,984	(21.1)	24,826	(75.0)	1,295	( 3.9)	33,105	(100.0)
North Dakota	245	(19.7)	968	(77.9)	29	( 2.3)	1,242	(100.0)
Ohio	6,221	(16.6)	29,613	(79.0)	1,645	( 4.4)	37,479	(100.0)
Oregon	3,294	(23.0)	10,704	(74.6)	346	( 2.4)	14,344	(100.0)
Pennsylvania	5,748	(16.1)	29,854	(83.8)	15	( 0.0)	35,617	(100.0)
Rhode Island	808	(17.6)	3,141	(68.3)	652	(14.2)	4,601	(100.0)
South Carolina	1,520	(17.3)	7,280	(82.7)	1	( 0.0)	8,801	(100.0)
South Dakota	129	(19.1)	543	(80.6)	2	( 0.3)	674	(100.0)
Tennessee	3,557	(18.9)	14,958	(79.4)	334	( 1.8)	18,849	(100.0)
Texas	16,679	(20.4)	62,744	(76.8)	2,263	( 2.8)	81,686	(100.0)
Utah	1,198	(34.4)	2,289	(65.6)	0	( 0.0)	3,487	(100.0)
Vermont	379	(20.3)	1,402	(75.0)	89	( 4.8)	1,870	(100.0)
West Virginia	488	(17.8)	2,229	(81.4)	21	( 0.8)	2,738	(100.0)
Wisconsin <sup>††</sup>	2,036	(18.0)	9,258	(81.8)	28	( 0.2)	11,322	(100.0)
Wyoming	30	(16.0)	157	(83.5)	1	( 0.5)	188	(100.0)
<b>Total</b>	<b>121,162</b>	<b>(18.4)</b>	<b>520,671</b>	<b>(78.9)</b>	<b>17,719</b>	<b>( 2.7)</b>	<b>659,552</b>	<b>(100.0)</b>
Abortion ratio <sup>§§</sup>	71		627				253	

\* Data from 37 states and New York City; excludes six areas where marital status was reported as unknown for >15% of women.

† Includes married and separated.

§ Includes never married, divorced, and widowed.

¶ Percentages might not add to 100.0 because of rounding.

\*\* Unpublished small numbers distributed as the known numbers using data from public use tape.

†† Includes residents only.

§§ Calculated as the number of legal abortions obtained by women of a given marital status per 1,000 live births to women of the same marital status for these states. For each state, data for women of unknown marital status were distributed according to the known marital status distribution for that state.

**TABLE 12. Reported legal abortions, by number of previous live births and state of occurrence—selected states,\* United States, 1998**

State	No. previous live births													
	0		1		2		3		>4		Unknown		Total	
	No.	(%)	No.	(%)	No.	(%)	No.	(%)	No.	(%)	No.	(%)	No.	(%)†
Alabama	5,697	(42.6)	3,989	(29.8)	2,471	(18.5)	767	(5.7)	304	(2.3)	158	(1.2)	13,386	(100.0)
Arizona	6,575	(44.6)	3,713	(25.2)	2,640	(17.9)	1,124	(7.6)	694	(4.7)	1	(0.0)	14,747	(100.0)
Colorado	3,707	(49.5)	1,418	(18.9)	991	(13.2)	391	(5.2)	165	(2.2)	821	(11.0)	7,493	(100.0)
Delaware	2,439	(44.7)	1,520	(27.9)	959	(17.6)	347	(6.4)	165	(3.0)	25	(0.5)	5,455	(100.0)
Georgia	14,212	(43.9)	9,363	(28.9)	5,764	(17.8)	2,002	(6.2)	899	(2.8)	109	(0.3)	32,349	(100.0)
Hawaii	2,113	(50.8)	890	(21.4)	587	(14.1)	269	(6.5)	125	(3.0)	178	(4.3)	4,162	(100.0)
Idaho	441	(49.7)	217	(24.4)	139	(15.7)	52	(5.9)	38	(4.3)	1	(0.1)	888	(100.0)
Indiana§	4,723	(38.0)	3,341	(26.9)	2,460	(19.8)	919	(7.4)	418	(3.4)	582	(4.7)	12,443	(100.0)
Iowa¶	3,053	(49.1)	1,426	(22.9)	1,054	(17.0)	423	(6.8)	190	(3.1)	68	(1.1)	6,214	(100.0)
Kansas	5,258	(45.7)	2,905	(25.3)	2,115	(18.4)	780	(6.8)	437	(3.8)	0	(0.0)	11,495	(100.0)
Kentucky	2,838	(42.3)	2,035	(30.3)	1,251	(18.7)	389	(5.8)	176	(2.6)	17	(0.3)	6,706	(100.0)
Louisiana	4,376	(38.6)	3,122	(27.5)	2,064	(18.2)	693	(6.1)	333	(2.9)	763	(6.7)	11,351	(100.0)
Maryland	4,365	(41.7)	3,045	(29.1)	2,007	(19.2)	715	(6.8)	326	(3.1)	0	(0.0)	10,458	(100.0)
Michigan	11,499	(40.9)	7,637	(27.2)	5,635	(20.0)	2,203	(7.8)	1,092	(3.9)	41	(0.1)	28,107	(100.0)
Minnesota	5,947	(41.2)	3,390	(23.5)	2,593	(18.0)	1,160	(8.0)	789	(5.5)	544	(3.8)	14,423	(100.0)
Mississippi	1,531	(38.7)	1,189	(30.1)	814	(20.6)	294	(7.4)	124	(3.1)	3	(0.1)	3,955	(100.0)
Missouri	3,634	(40.0)	2,511	(27.6)	1,846	(20.3)	725	(8.0)	373	(4.1)	0	(0.0)	9,089	(100.0)
Montana	1,320	(51.3)	598	(23.2)	410	(15.9)	164	(6.4)	73	(2.8)	8	(0.3)	2,573	(100.0)
Nebraska	2,376	(46.2)	1,206	(23.5)	957	(18.6)	392	(7.6)	198	(3.9)	11	(0.2)	5,140	(100.0)
Nevada	2,292	(35.1)	1,523	(23.3)	1,129	(17.3)	465	(7.1)	223	(3.4)	907	(13.9)	6,539	(100.0)
New Jersey	12,337	(34.6)	10,296	(28.9)	7,508	(21.0)	2,786	(7.8)	1,387	(3.9)	1,372	(3.8)	35,686	(100.0)
New Mexico	2,245	(41.6)	1,495	(27.7)	969	(18.0)	440	(8.2)	246	(4.6)	0	(0.0)	5,395	(100.0)
New York	49,183	(35.2)	37,587	(26.9)	28,569	(20.5)	11,732	(8.4)	6,960	(5.0)	5,615	(4.0)	139,646	(100.0)
City	34,554	(33.2)	30,295	(29.1)	22,854	(22.0)	9,479	(9.1)	5,765	(5.5)	1,035	(1.0)	103,982	(100.0)
State	14,629	(41.0)	7,292	(20.4)	5,715	(16.0)	2,253	(6.3)	1,195	(3.4)	4,580	(12.8)	35,664	(100.0)
North Carolina	13,604	(41.1)	8,397	(25.4)	5,241	(15.8)	1,767	(5.3)	906	(2.7)	3,190	(9.6)	33,105	(100.0)
North Dakota	603	(48.6)	291	(23.4)	210	(16.9)	94	(7.6)	42	(3.4)	2	(0.2)	1,242	(100.0)
Ohio	11,861	(31.6)	10,726	(28.6)	7,493	(20.0)	2,785	(7.4)	1,268	(3.4)	3,346	(8.9)	37,479	(100.0)
Oregon	6,481	(45.2)	3,715	(25.9)	2,572	(17.9)	977	(6.8)	470	(3.3)	129	(0.9)	14,344	(100.0)
Pennsylvania	14,851	(41.7)	9,727	(27.3)	6,884	(19.3)	2,734	(7.7)	1,416	(4.0)	5	(0.0)	35,617	(100.0)
Rhode Island§	2,161	(47.0)	1,154	(25.1)	815	(17.7)	298	(6.5)	148	(3.2)	25	(0.5)	4,601	(100.0)
South Carolina	3,965	(45.1)	2,554	(29.0)	1,599	(18.2)	488	(5.5)	189	(2.1)	6	(0.1)	8,801	(100.0)
South Dakota	328	(48.7)	142	(21.1)	129	(19.1)	73	(10.8)	0	(0.0)	2	(0.3)	674	(100.0)
Tennessee	7,414	(39.3)	5,931	(31.5)	3,593	(19.1)	1,235	(6.6)	594	(3.2)	82	(0.4)	18,849	(100.0)
Texas	33,534	(41.1)	22,721	(27.8)	15,622	(19.1)	6,060	(7.4)	3,066	(3.8)	683	(0.8)	81,686	(100.0)
Utah	1,469	(42.1)	852	(24.4)	717	(20.6)	285	(8.2)	153	(4.4)	11	(0.3)	3,487	(100.0)
Vermont	1,050	(56.1)	389	(20.8)	290	(15.5)	109	(5.8)	32	(1.7)	0	(0.0)	1,870	(100.0)
Virginia	11,121	(42.6)	6,997	(26.8)	4,621	(17.7)	1,561	(6.0)	613	(2.3)	1,202	(4.6)	26,115	(100.0)
Washington	11,532	(45.5)	6,378	(25.2)	4,709	(18.6)	1,736	(6.9)	888	(3.5)	84	(0.3)	25,327	(100.0)
West Virginia	893	(32.6)	847	(30.9)	566	(20.7)	259	(9.5)	173	(6.3)	0	(0.0)	2,738	(100.0)
Wyoming	77	(41.0)	41	(21.8)	46	(24.5)	15	(8.0)	2	(1.1)	7	(3.7)	188	(100.0)
<b>Total</b>	<b>273,105</b>	<b>(39.9)</b>	<b>185,278</b>	<b>(27.1)</b>	<b>130,039</b>	<b>(19.0)</b>	<b>49,708</b>	<b>(7.3)</b>	<b>25,695</b>	<b>(3.8)</b>	<b>19,998</b>	<b>(2.9)</b>	<b>683,823</b>	<b>(100.0)</b>
Ratio**	255		214		300		305		243				252	

\* Data from 39 states and New York City; excludes three states where number of previous live births was reported as unknown for &gt;15% of women.

† Percentages might not add to 100.0 because of rounding.

§ Indicates number of living children.

¶ Includes residents only.

\*\* Calculated as the number of legal abortions obtained by women with a given number of previous live births per 1,000 live births to women with the same number of previous live births for these states. For each state, data for women whose number of previous live births was unknown were distributed according to the known number of previous live births for that state.

**TABLE 13. Reported legal abortions, by number of previous legal induced abortions and state of occurrence — selected states,\* United States, 1998**

State	No. previous induced abortions											
	0		1		2		≥3		Unknown		Total	
	No.	(%)	No.	(%)	No.	(%)	No.	(%)	No.	(%)	No.	(%) <sup>†</sup>
Alabama	8,481	(63.4)	3,350	(25.0)	999	( 7.5)	387	( 2.9)	169	( 1.3)	13,386	(100.0)
Arizona	9,358	(63.5)	3,701	(25.1)	1,131	( 7.7)	355	( 2.4)	202	( 1.4)	14,747	(100.0)
Colorado	4,465	(59.6)	1,782	(23.8)	481	( 6.4)	215	( 2.9)	550	( 7.3)	7,493	(100.0)
Delaware	3,135	(57.5)	1,498	(27.5)	509	( 9.3)	298	( 5.5)	15	( 0.3)	5,455	(100.0)
Georgia	18,628	(57.6)	9,000	(27.8)	2,996	( 9.3)	1,482	( 4.6)	243	( 0.8)	32,349	(100.0)
Hawaii	1,784	(42.9)	1,243	(29.9)	604	(14.5)	384	( 9.2)	147	( 3.5)	4,162	(100.0)
Idaho	657	(74.0)	173	(19.5)	40	( 4.5)	17	( 1.9)	1	( 0.1)	888	(100.0)
Indiana	7,618	(61.2)	3,021	(24.3)	969	( 7.8)	458	( 3.7)	377	( 3.0)	12,443	(100.0)
Iowa <sup>§</sup>	3,913	(63.0)	1,577	(25.4)	479	( 7.7)	218	( 3.5)	27	( 0.4)	6,214	(100.0)
Kansas	7,327	(63.7)	2,878	(25.0)	912	( 7.9)	378	( 3.3)	0	( 0.0)	11,495	(100.0)
Kentucky	4,129	(61.6)	1,698	(25.3)	586	( 8.7)	268	( 4.0)	25	( 0.4)	6,706	(100.0)
Maryland	2,464	(23.6)	4,047	(38.7)	2,378	(22.7)	1,569	(15.0)	0	( 0.0)	10,458	(100.0)
Michigan	15,154	(53.9)	7,235	(25.7)	3,328	(11.8)	2,306	( 8.2)	84	( 0.3)	28,107	(100.0)
Minnesota	8,799	(61.0)	3,225	(22.4)	1,179	( 8.2)	699	( 4.8)	521	( 3.6)	14,423	(100.0)
Mississippi	2,465	(62.3)	1,008	(25.5)	351	( 8.9)	128	( 3.2)	3	( 0.1)	3,955	(100.0)
Missouri	5,170	(56.9)	2,495	(27.5)	919	(10.1)	505	( 5.6)	0	( 0.0)	9,089	(100.0)
Montana	1,520	(59.1)	647	(25.1)	221	( 8.6)	177	( 6.9)	8	( 0.3)	2,573	(100.0)
Nebraska	3,409	(66.3)	1,097	(21.3)	384	( 7.5)	248	( 4.8)	2	( 0.0)	5,140	(100.0)
Nevada	3,226	(49.3)	1,773	(27.1)	833	(12.7)	674	(10.3)	33	( 0.5)	6,539	(100.0)
New Jersey	15,455	(43.3)	9,988	(28.0)	4,830	(13.5)	3,745	(10.5)	1,668	( 4.7)	35,686	(100.0)
New Mexico	3,349	(62.1)	1,235	(22.9)	402	( 7.5)	203	( 3.8)	206	( 3.8)	5,395	(100.0)
New York	54,236	(38.8)	37,678	(27.0)	22,354	(16.0)	20,190	(14.5)	5,188	( 3.7)	139,646	(100.0)
City	35,899	(34.5)	29,717	(28.6)	19,054	(18.3)	17,905	(17.2)	1,407	( 1.4)	103,982	(100.0)
State	18,337	(51.4)	7,961	(22.3)	3,300	( 9.3)	2,285	( 6.4)	3,781	(10.6)	35,664	(100.0)
North Carolina	19,116	(57.7)	7,683	(23.2)	2,555	( 7.7)	1,177	( 3.6)	2,574	( 7.8)	33,105	(100.0)
North Dakota	1,078	(86.8)	131	(10.5)	23	( 1.9)	8	( 0.6)	2	( 0.2)	1,242	(100.0)
Oregon	8,191	(57.1)	3,622	(25.3)	1,434	(10.0)	966	( 6.7)	131	( 0.9)	14,344	(100.0)
Pennsylvania	19,604	(55.0)	9,741	(27.3)	3,911	(11.0)	2,355	( 6.6)	6	( 0.0)	35,617	(100.0)
Rhode Island	2,544	(55.3)	1,236	(26.9)	489	(10.6)	288	( 6.3)	44	( 1.0)	4,601	(100.0)
South Carolina	5,538	(62.9)	2,303	(26.2)	676	( 7.7)	284	( 3.2)	0	( 0.0)	8,801	(100.0)
South Dakota	480	(71.2)	143	(21.2)	39	( 5.8)	10	( 1.5)	2	( 0.3)	674	(100.0)
Tennessee	11,637	(61.7)	4,729	(25.1)	1,708	( 9.1)	732	( 3.9)	43	( 0.2)	18,849	(100.0)
Texas	48,357	(59.2)	21,903	(26.8)	7,036	( 8.6)	3,540	( 4.3)	850	( 1.0)	81,686	(100.0)
Utah	2,236	(64.1)	791	(22.7)	273	( 7.8)	177	( 5.1)	10	( 0.3)	3,487	(100.0)
Vermont	1,160	(62.0)	451	(24.1)	161	( 8.6)	96	( 5.1)	2	( 0.1)	1,870	(100.0)
Virginia	13,944	(53.4)	7,386	(28.3)	2,761	(10.6)	1,405	( 5.4)	619	( 2.4)	26,115	(100.0)
Washington	13,173	(52.0)	6,804	(26.9)	3,012	(11.9)	2,238	( 8.8)	100	( 0.4)	25,327	(100.0)
West Virginia	2,311	(84.4)	310	(11.3)	76	( 2.8)	41	( 1.5)	0	( 0.0)	2,738	(100.0)
Wyoming	130	(69.1)	35	(18.6)	10	( 5.3)	5	( 2.7)	8	( 4.3)	188	(100.0)
<b>Total</b>	<b>334,241</b>	<b>(52.6)</b>	<b>167,617</b>	<b>(26.4)</b>	<b>71,049</b>	<b>(11.2)</b>	<b>48,226</b>	<b>( 7.6)</b>	<b>13,860</b>	<b>( 2.2)</b>	<b>634,993</b>	<b>(100.0)</b>

\* Data from 37 states and New York City; excludes five areas where number of previous induced abortions was reported as unknown for &gt;15% of women.

<sup>†</sup> Percentages might not add to 100.0 because of rounding.<sup>§</sup> Includes residents only.

**TABLE 14. Reported legal abortions, by known race, age group, and marital status of women who obtained abortions — selected states, United States, 1998**

Characteristic	Race				Total	
	White		Black/other		No.	(%)
	No.	(%)	No.	(%)		
<b>Age group (yrs)</b>						
<15	2,086	( 0.6)	2,312	( 0.9)	<b>4,398</b>	( 0.7)
15–19	70,934	( 19.9)	42,854	( 17.5)	<b>113,788</b>	( 18.9)
20–24	112,499	( 31.6)	79,476	( 32.4)	<b>191,975</b>	( 31.9)
25–29	79,042	( 22.2)	62,046	( 25.3)	<b>141,088</b>	( 23.5)
30–34	48,679	( 13.7)	34,869	( 14.2)	<b>83,548</b>	( 13.9)
35–39	31,801	( 8.9)	18,147	( 7.4)	<b>49,948</b>	( 8.3)
≥40	10,907	( 3.1)	5,362	( 2.2)	<b>16,269</b>	( 2.7)
<b>Total*</b>	<b>355,948</b>	<b>(100.0)</b>	<b>245,066</b>	<b>(100.0)</b>	<b>601,014</b>	<b>(100.0)</b>
<b>Marital status</b>						
Married	63,696	( 21.2)	34,978	( 16.3)	<b>98,674</b>	( 19.2)
Unmarried	236,380	( 78.8)	179,561	( 83.7)	<b>415,941</b>	( 80.8)
<b>Total†</b>	<b>300,076</b>	<b>(100.0)</b>	<b>214,539</b>	<b>(100.0)</b>	<b>514,615</b>	<b>(100.0)</b>

\* Data from 37 states and New York City; excludes four states where race was reported as unknown for >15% of women. Percentages might not add to 100.0 because of rounding.

† Data from 32 states and New York City; excludes seven states where race or marital status was reported as unknown for >15% of women.

**TABLE 15. Reported legal abortions, by known ethnicity, age group, and marital status of women who obtained abortions — selected states, United States, 1998**

Characteristic	Ethnicity				Total	
	Hispanic		Non-Hispanic		No.	(%)
	No.	(%)	No.	(%)		
<b>Age group (yrs)</b>						
<15	451	( 0.6)	2,702	( 0.7)	<b>3,153</b>	( 0.7)
15–19	13,127	( 18.2)	68,709	( 18.6)	<b>81,836</b>	( 18.5)
20–24	24,531	( 33.9)	115,808	( 31.3)	<b>140,339</b>	( 31.8)
25–29	17,582	( 24.3)	87,359	( 23.6)	<b>104,941</b>	( 23.7)
30–34	9,983	( 13.8)	52,620	( 14.2)	<b>62,603</b>	( 14.2)
35–39	5,111	( 7.1)	31,798	( 8.6)	<b>36,909</b>	( 8.4)
≥40	1,514	( 2.1)	10,625	( 2.9)	<b>12,139</b>	( 2.7)
<b>Total*</b>	<b>72,299</b>	<b>(100.0)</b>	<b>369,621</b>	<b>(100.0)</b>	<b>441,920</b>	<b>(100.0)</b>
<b>Marital status</b>						
Married	14,972	( 21.4)	66,326	( 18.7)	<b>81,298</b>	( 19.1)
Unmarried	54,892	( 78.6)	289,063	( 81.3)	<b>343,955</b>	( 80.9)
<b>Total†</b>	<b>69,864</b>	<b>(100.0)</b>	<b>355,389</b>	<b>(100.0)</b>	<b>425,253</b>	<b>(100.0)</b>

\* Data from 23 states and New York City; excludes 14 states where ethnicity was reported as unknown for >15% of women.

† Data from 21 states and New York City; excludes 16 states where ethnicity or marital status was reported as unknown for >15% of women.



**TABLE 16. Reported legal abortions, by known weeks of gestation, age group, race, and ethnicity of women who obtained abortions—selected states, United States, 1998**

Characteristic	Weeks of gestation										Total			
	<8		9–10		11–12		13–15		16–20		≥21		No.	(%)*
	No.	(%)	No.	(%)	No.	(%)	No.	(%)	No.	(%)	No.	(%)		
<b>Age group (yrs)</b>														
<15	1,808	(37.4)	1,043	(21.6)	741	(15.3)	557	(11.5)	440	(9.1)	240	(5.0)	<b>4,829</b>	<b>(100.0)</b>
15–19	59,076	(46.0)	30,178	(23.5)	17,500	(13.6)	11,153	( 8.7)	7,595	(5.9)	2,860	(2.2)	<b>128,362</b>	<b>(100.0)</b>
20–24	116,311	(54.0)	47,581	(22.1)	24,710	(11.5)	14,602	( 6.8)	9,076	(4.2)	2,997	(1.4)	<b>215,277</b>	<b>(100.0)</b>
25–29	95,149	(59.8)	32,976	(20.7)	15,377	( 9.7)	8,587	( 5.4)	5,299	(3.3)	1,714	(1.1)	<b>159,102</b>	<b>(100.0)</b>
30–34	58,377	(61.8)	18,702	(19.8)	8,345	( 8.8)	4,713	( 5.0)	3,183	(3.4)	1,078	(1.1)	<b>94,398</b>	<b>(100.0)</b>
35–39	35,361	(62.6)	11,022	(19.5)	4,760	( 8.4)	2,699	( 4.8)	2,024	(3.6)	632	(1.1)	<b>56,498</b>	<b>(100.0)</b>
≥40	11,934	(65.0)	3,372	(18.4)	1,364	( 7.4)	785	( 4.3)	679	(3.7)	215	(1.2)	<b>18,349</b>	<b>(100.0)</b>
<b>Total†</b>	<b>378,016</b>	<b>(55.9)</b>	<b>144,874</b>	<b>(21.4)</b>	<b>72,797</b>	<b>(10.8)</b>	<b>43,096</b>	<b>( 6.4)</b>	<b>28,296</b>	<b>(4.2)</b>	<b>9,736</b>	<b>(1.4)</b>	<b>676,815</b>	<b>(100.0)</b>
<b>Race</b>														
White	200,237	(57.5)	74,177	(21.3)	36,120	(10.4)	20,364	( 5.8)	12,924	(3.7)	4,342	(1.2)	<b>348,164</b>	<b>(100.0)</b>
Black	106,358	(51.5)	46,523	(22.5)	25,201	(12.2)	15,276	( 7.4)	9,938	(4.8)	3,301	(1.6)	<b>206,597</b>	<b>(100.0)</b>
Other	21,318	(63.7)	6,094	(18.2)	2,475	( 7.4)	1,706	( 5.1)	1,446	(4.3)	424	(1.3)	<b>33,463</b>	<b>(100.0)</b>
<b>Total§</b>	<b>327,913</b>	<b>(55.7)</b>	<b>126,794</b>	<b>(21.6)</b>	<b>63,796</b>	<b>(10.8)</b>	<b>37,346</b>	<b>( 6.3)</b>	<b>24,308</b>	<b>(4.1)</b>	<b>8,067</b>	<b>(1.4)</b>	<b>588,224</b>	<b>(100.0)</b>
<b>Ethnicity</b>														
Hispanic	42,241	(57.2)	14,969	(20.3)	7,238	( 9.8)	5,141	( 7.0)	3,351	(4.5)	846	(1.1)	<b>73,786</b>	<b>(100.0)</b>
Non-Hispanic	195,965	(54.8)	76,982	(21.5)	38,929	(10.9)	23,404	( 6.5)	16,593	(4.6)	5,934	(1.7)	<b>357,807</b>	<b>(100.0)</b>
<b>Total¶</b>	<b>238,206</b>	<b>(55.2)</b>	<b>91,951</b>	<b>(21.3)</b>	<b>46,167</b>	<b>(10.7)</b>	<b>28,545</b>	<b>( 6.6)</b>	<b>19,944</b>	<b>(4.6)</b>	<b>6,780</b>	<b>(1.6)</b>	<b>431,593</b>	<b>(100.0)</b>

\* Percentages might not add to 100.0 because of rounding.

† Data from 41 states and New York City; excludes one state where weeks of gestation was reported as unknown for &gt;15% of women.

§ Data from 36 states and New York City; excludes four states where weeks of gestation or race was reported as unknown for &gt;15% of women.

¶ Data from 22 states and New York City; excludes 14 states where weeks of gestation or ethnicity was reported as unknown for &gt;15% of women.

**TABLE 17. Reported legal abortions obtained at ≤8 weeks of gestation, by known weeks of gestation, age group, race, and ethnicity of women who obtained abortions — selected states, United States, 1998**

Characteristic	Weeks of gestation						Total	
	≤6		7		8		No.	(%)*
	No.	(%)*	No.	(%)*	No.	(%)*		
<b>Age group (yrs)</b>								
< 15	540	(11.3)	516	(10.8)	733	(15.4)	<b>1,789</b>	<b>(37.6)</b>
15–19	17,840	(14.1)	18,360	(14.6)	21,972	(17.4)	<b>58,172</b>	<b>(46.1)</b>
20–24	38,512	(18.2)	36,601	(17.3)	39,327	(18.6)	<b>114,440</b>	<b>(54.1)</b>
25–29	33,502	(21.4)	30,257	(19.3)	29,951	(19.1)	<b>93,710</b>	<b>(59.9)</b>
30–34	21,295	(22.9)	18,502	(19.9)	17,714	(19.1)	<b>57,511</b>	<b>(61.9)</b>
35–39	12,858	(23.1)	11,255	(20.3)	10,687	(19.2)	<b>34,800</b>	<b>(62.6)</b>
≥40	4,623	(25.6)	3,707	(20.6)	3,422	(19.0)	<b>11,752</b>	<b>(65.2)</b>
<b>Total†</b>	<b>129,170</b>	<b>(19.4)</b>	<b>119,198</b>	<b>(17.9)</b>	<b>123,806</b>	<b>(18.6)</b>	<b>372,174</b>	<b>(55.9)</b>
<b>Race</b>								
White	69,729	(20.0)	65,306	(18.8)	65,202	(18.7)	<b>200,237</b>	<b>(57.5)</b>
Black	34,840	(16.9)	33,692	(16.3)	37,826	(18.3)	<b>106,358</b>	<b>(51.5)</b>
Other	8,489	(25.4)	6,498	(19.4)	6,331	(18.9)	<b>21,318</b>	<b>(63.7)</b>
<b>Total§</b>	<b>113,058</b>	<b>(19.2)</b>	<b>105,496</b>	<b>(17.9)</b>	<b>109,359</b>	<b>(18.6)</b>	<b>327,913</b>	<b>(55.8)</b>
<b>Ethnicity</b>								
Hispanic	15,018	(20.4)	13,489	(18.3)	13,734	(18.6)	<b>42,241</b>	<b>(57.3)</b>
Non-Hispanic	65,150	(18.2)	63,123	(17.6)	67,692	(18.9)	<b>195,965</b>	<b>(54.8)</b>
<b>Total¶</b>	<b>80,168</b>	<b>(18.6)</b>	<b>76,612</b>	<b>(17.8)</b>	<b>81,426</b>	<b>(18.9)</b>	<b>238,206</b>	<b>(55.2)</b>

\* Percentages were calculated using total number of abortions obtained at all known weeks of gestation. Percentages might not add to the percentage obtained at ≤8 weeks of gestation because fewer states are included here.

† Data from 40 states and New York City; excludes one state where weeks of gestation was reported as unknown for &gt;15% of women.

§ Data from 35 states and New York City; excludes four states where weeks of gestation or race was reported as unknown for &gt;15% of women.

¶ Data from 21 states and New York City; excludes 14 states where weeks of gestation or ethnicity was reported as unknown for &gt;15% of women.

**TABLE 18. Reported legal abortions, by known weeks of gestation and type of procedure — selected states,\* United States, 1998**

Type of procedure	Weeks of gestation										Total			
	<8		9–10		11–12		13–15		16–20		≥21		No.	(%)
	No.	(%)	No.	(%)	No.	(%)	No.	(%)	No.	(%)	No.	(%)		
Curettage (suction or sharp) <sup>†</sup>	360,149	( 98.5)	140,223	( 99.8)	69,920	( 99.6)	41,677	( 99.4)	26,056	( 94.4)	8,206	( 86.3)	<b>646,231</b>	<b>( 98.6)</b>
Intrauterine saline instillation	39	( 0.0) <sup>§</sup>	20	( 0.0) <sup>§</sup>	25	( 0.0) <sup>§</sup>	47	( 0.1)	601	( 2.2)	230	( 2.4)	<b>962</b>	<b>( 0.1)</b>
Intrauterine prostaglandin instillation	31	( 0.0) <sup>§</sup>	13	( 0.0) <sup>§</sup>	12	( 0.0) <sup>§</sup>	36	( 0.1)	258	( 0.9)	184	( 1.9)	<b>534</b>	<b>( 0.1)</b>
Medical <sup>¶</sup>	4,007	( 1.1)	199	( 0.1)	72	( 0.1)	59	( 0.1)	250	( 0.9)	146	( 1.5)	<b>4,733</b>	<b>( 0.7)</b>
Other**	1,321	( 0.4)	114	( 0.1)	167	( 0.2)	111	( 0.3)	439	( 1.6)	747	( 7.8)	<b>2,899</b>	<b>( 0.4)</b>
<b>Total<sup>††</sup></b>	<b>365,547</b>	<b>(100.0)</b>	<b>140,569</b>	<b>(100.0)</b>	<b>70,196</b>	<b>(100.0)</b>	<b>41,930</b>	<b>(100.0)</b>	<b>27,604</b>	<b>(100.0)</b>	<b>9,513</b>	<b>(100.0)</b>	<b>655,359</b>	<b>(100.0)</b>

\* Data from 38 states and New York City; excludes one state where weeks of gestation was reported as unknown for >15% of women.

<sup>†</sup> Includes dilatation and evacuation.

<sup>§</sup> <0.05%.

<sup>¶</sup> Medical (nonsurgical) procedures differed by weeks of gestation (i.e., methotrexate and misoprostol or mifepristone and misoprostol were reported for abortions performed at ≤8 weeks' gestation; vaginal prostaglandins were primarily reported for abortions performed at later weeks of gestation).

\*\* Includes hysterotomy/hysterectomy and procedures reported as "other."

<sup>††</sup> Percentages might not add to 100.0 because of rounding.

**TABLE 19. Number of deaths and case-fatality rates\* for abortion-related deaths reported to CDC, by type of abortion — United States, 1972–1997**

Year	Type of abortion			Total	Case-fatality rate
	Legal	Illegal	Unknown <sup>†</sup>		
1972	24	39	2	65	4.1
1973	25	19	3	47	4.1
1974	26	6	1	33	3.4
1975	29	4	1	34	3.4
1976	11	2	1	14	1.1
1977	17	4	0	21	1.6
1978	9	7	0	16	0.8
1979	22	0	0	22	1.8
1980	9	1	2	12	0.7
1981	8	1	0	9	0.6
1982	11	1	0	12	0.8
1983	11	1	0	12	0.9
1984	12	0	0	12	0.9
1985	11	1	1	13	0.8
1986	11	0	2	13	0.8
1987	7	2	0	9	0.5
1988	16	0	0	16	1.2
1989	12	1	0	13	0.9
1990	5	0	0	5	0.3
1991	11	1	0	12	0.8
1992	10	0	0	10	0.7
1993	6	1	2	9	0.5
1994	10	2	0	12	0.8
1995	4	0	0	4	0.3
1996	9	0	0	9	0.7
1997	7	0	0	7	0.6
<b>Total</b>	<b>333</b>	<b>93</b>	<b>15</b>	<b>441</b>	<b>1.1</b>

\* Legal induced abortion-related deaths per 100,000 reported legal induced abortions.

<sup>†</sup> Unknown if abortion was induced or spontaneous.

All *MMWR* references are available on the Internet at <http://www.cdc.gov/mmwr>. Use the search function to find specific articles.

Use of trade names and commercial sources is for identification only and does not imply endorsement by the U.S. Department of Health and Human Services.

References to non-CDC sites on the Internet are provided as a service to *MMWR* readers and do not constitute or imply endorsement of these organizations or their programs by CDC or the U.S. Department of Health and Human Services. CDC is not responsible for the content of these sites. URL addresses listed in *MMWR* were current as of the date of publication.

The *Morbidity and Mortality Weekly Report (MMWR)* series is prepared by the Centers for Disease Control and Prevention (CDC) and is available free of charge in electronic format and on a paid subscription basis for paper copy. To receive an electronic copy on Friday of each week, send an e-mail message to [listserv@listserv.cdc.gov](mailto:listserv@listserv.cdc.gov). The body content should read *SUBscribe mmwr-toc*. Electronic copy also is available from CDC's Internet server at <http://www.cdc.gov/mmwr> or from CDC's file transfer protocol server at <ftp://ftp.cdc.gov/pub/publications/mmwr>. To subscribe for paper copy, contact Superintendent of Documents, U.S. Government Printing Office, Washington, DC 20402; telephone 202-512-1800.

Data in the weekly *MMWR* are provisional, based on weekly reports to CDC by state health departments. The reporting week concludes at close of business on Friday; compiled data on a national basis are officially released to the public on the following Friday. Address inquiries about the *MMWR* series, including material to be considered for publication, to Editor, *MMWR* Series, Mailstop C-08, CDC, 1600 Clifton Rd., N.E., Atlanta, GA 30333; telephone 888-232-3228.

All material in the *MMWR* series is in the public domain and may be used and reprinted without permission; however, citation of the source is appreciated.